

## SPSS Access Options

Last Revised 5/28/19

SPSS can be accessed in a number of ways by Rutgers students:

### Computer Labs

First, SPSS is available on the PCs in the computer labs at Bloustein and the general access labs in New Brunswick. The following link provides location information for the general access computer labs:

<https://oit-nb.rutgers.edu/labs/locations>

### Purchase SPSS

Second, a copy of the software with a one year license can be purchased through Rutgers provided that it is for instructional and non-commercial purposes. This software license expires each year on 7/1 and is not pro-rated. This means that you can buy the software in September or in May and it will cost the same amount, but you will have a much different period of time to use the software. The software costs \$100 and can be found here:

<https://software.rutgers.edu/product/3486>

### Trial Install

IBM also provide a 14 day trial version of SPSS and that can be found here:

<https://www.ibm.com/products/spss-statistics>

### Didact

Didact is a teaching computing cluster at Rutgers that is used for classes.

### Step 1 Get an Account

The first step in using the system is to request an account. You can do that using the form on this page:

<https://oarc.rutgers.edu/course-registration-form/>

### VPN Access if Necessary

If you are outside of the Rutgers network, you'll need to connect to the Rutgers VPN before you can login to Didact. To connect to the Rutgers VPN, use the following link and login with your NetID credentials:

<https://ssl-vpn.rutgers.edu/>

Once you connect to the Rutgers VPN, you can open a new tab and use the link in step 2 to login to the system.

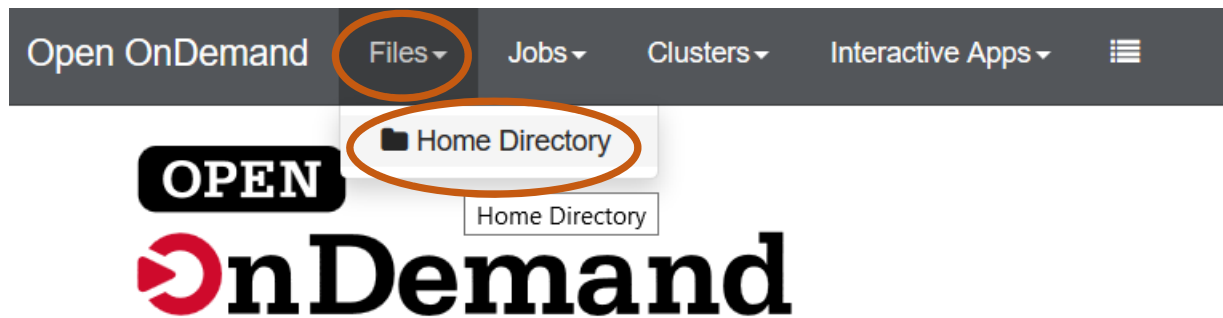
## Step 2 Login to the system

Once you have an account and are either inside the Rutgers network, or connected through the VPN, you can login using the following link and your NetID credentials:

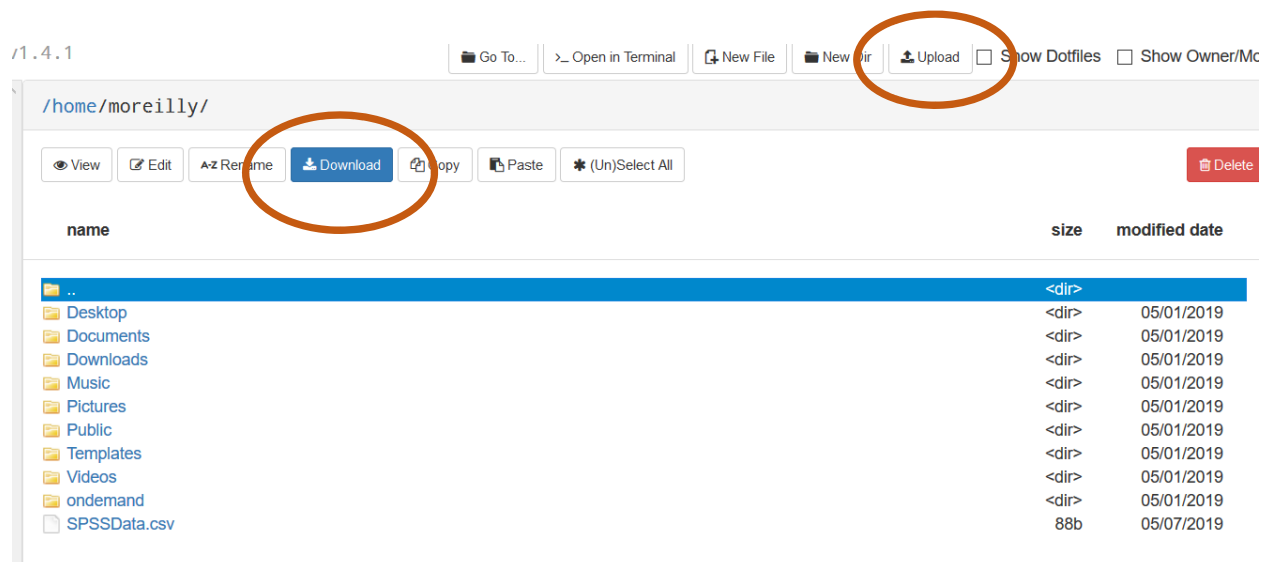
[https://didact.oarc.rutgers.edu/pun/sys/dashboard/batch\\_connect/sys/bc\\_desktop/didact/session\\_con texts/new](https://didact.oarc.rutgers.edu/pun/sys/dashboard/batch_connect/sys/bc_desktop/didact/session_con texts/new)

## Step 3 Moving Files

Before you start using SPSS, you should be aware of how you can move files from your local computer to Didact. To move files, simply use the Files drop down item and the Home Directory entry as seen below:



This will bring up your home directory on Didact in a new tab in your browser and you can then either upload or download files using the appropriate buttons. To upload a file, select upload and then browse to the file you want to upload. To download a file, browse to the file you want to download, select it and then use the download button.



To open the desktop and start using SPSS go back to the Didact Desktop tab in your browser. You can then set the number of hours you plan on using the device and select Launch:

# Didact Desktop

This app will launch an interactive desktop on one or more compute nodes. You will have full access to the resources these nodes provide. This is analogous to an interactive batch job.

## Number of hours

1

## Number of nodes

1

## Number of cores

2

Number of cores on node

☐ I would like to receive an email when the session starts

Launch

\* All Didact Desktop session data is generated and stored under the user's home directory

The system will then create the desktop for you to use and as soon as it is ready, you'll see a Launch button to access the system:

Didact Desktop (2685)

1 node | 2 cores | Running

Host: didact008

Created at: 2019-05-21 17:37:43 EDT

Time Remaining: about 1 hour

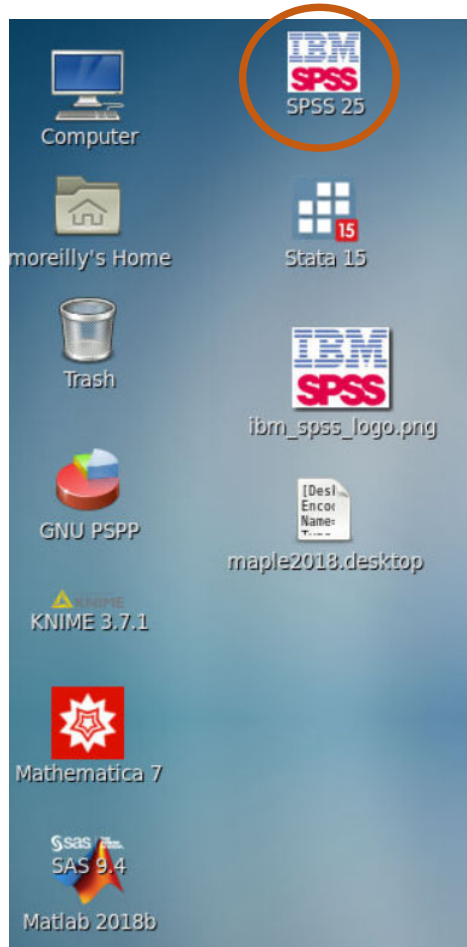
Session ID: [bb0a3405-87dd-460c-b41c-a3d1e25fe48f](#)

Delete

Launch noVNC in New Tab

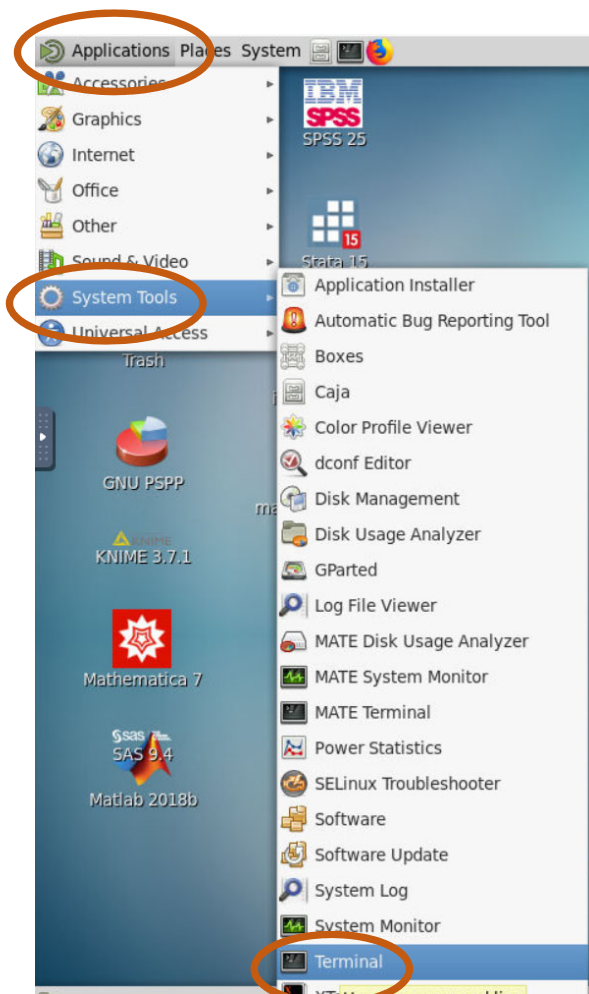
View Only (Share-able Link)

Next, you will see a virtual desktop and you should see SPSS on the desktop.



You can then double click on the icon to start the program. **Please note that it will take up to 30 seconds for the application to launch.**

If you don't see an SPSS icon, please go to the Applications Drop Down menu → System Tools → Terminal:



Once a terminal opens, please enter the following command:

```
cp /projects/community/desktops/* ~/Desktop/
```

```
View Search Terminal Help
y@sirius3 ~]$ cp /projects/community/desktops/* ~/Desktop/
```

The icons should then appear and you can double click on the SPSS icon to start the program. Please note there is a space between cp and /projects and between \* and ~.

When you're finished using SPSS, please save your file in your home directory for your next session, or so that you can transfer it to your computer. Please also shut down the virtual system you're using by going to System → Shut Down.

