

RUTGERS

Edward J. Bloustein School
of Planning and Public Policy

A photograph of three people walking on a paved path outdoors. On the left is a woman with short brown hair wearing a light blue button-down shirt and a white skirt. In the center is a man with short brown hair wearing a dark blue suit jacket, a white shirt, and a blue patterned tie. On the right is a man with short dark hair wearing a light blue button-down shirt and khaki pants. They are all looking towards the right. The background consists of green trees and a brick wall.

GRADUATE PROGRAM IN PUBLIC POLICY

Master of Public Policy

Master of Public Affairs and Politics

THE BLOUSTEIN SCHOOL MISSION

The Edward J. Bloustein School of Planning and Public Policy serves as one of the nation's key centers for the theory and practice of planning and public policy scholarship and analysis. As part of Rutgers, The State University of New Jersey, the school capitalizes on the strengths and resources of a major research university. The Bloustein School reaches out to the larger world, beyond the realm of academe, to contribute to regional, national, and international communities.

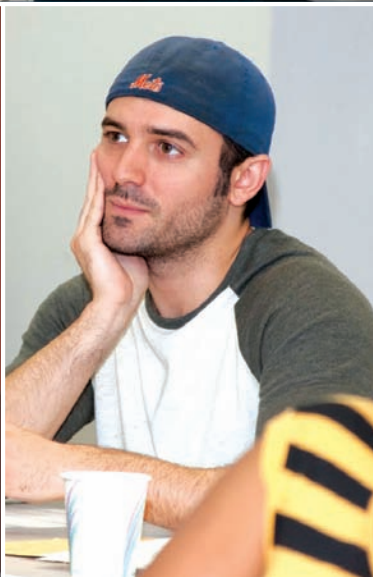
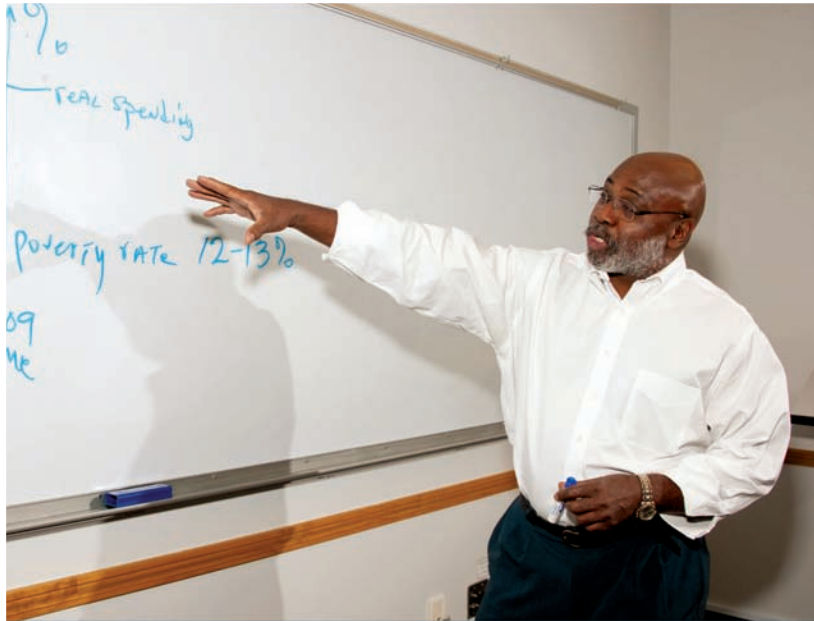
Edward J. Bloustein—Rutgers' former president, constitutional scholar, active citizen, philosopher, and teacher—lived a life of civic engagement that the school seeks to perpetuate through the contributions of its faculty, staff, and students.

THE PROGRAM IN PUBLIC POLICY

The Bloustein School is consistently ranked among the top policy and planning programs in the country. Faculty of the Program in Public Policy are nationally and internationally renowned scholars who are actively involved in shaping the fields of community development, social policy, education, environment, health policy, transportation, and workforce development. The faculty's cutting-edge research and policy work are augmented by the numerous research centers within the school, providing a rich, vibrant learning environment.

The select group of students admitted into the Master of Public Policy and Master of Public Affairs and Politics programs can take advantage of all the courses offered by the Planning and Doctoral programs at the Bloustein School, as well as the hundreds of courses offered elsewhere at Rutgers University. The Program in Public Policy also administers a new undergraduate major in public policy; masters students often work as teaching assistants in undergraduate courses.

On the front: Former New Jersey Governor James J. Florio (center) is a Senior Policy Fellow at the Bloustein School and teaches a course on "Decision Making in Public Policy."



MASTER OF PUBLIC POLICY (MPP)

The Master of Public Policy (MPP) program is typically a two-year degree for full-time students. Students must complete 48 credits, including 30 credits of required course work and 18 elective credits.

The Bloustein School's MPP program is one of only 11 programs in public policy accredited by the Network of Schools of Public Policy, Affairs, and Administration, the global standard in public service education. NASPAA accreditation recognizes that a master's program in public affairs, administration, or policy meets a set of standards regarding curriculum, administration, mission, student admissions, faculty quality, student services and placement, and facilities.

Required Course of Study (48 credits)

- Public Policy Formation (3 credits)
- Economics and Public Policy (3 credits)
- One of the following organizational courses (3 credits):
 - Managing People and Organizations
 - Nonprofit Management
 - Public Management
- One of the following financial courses (3 credits):
 - Finance
 - Budgeting and Public Policy
 - State and Local Public Finance
- Methods I: Research Design (3 credits)
- Methods II: Data Analysis (3 credits)
- Advanced Methods course selected from the school's numerous offerings (3 credits):
 - Advanced Qualitative Methods; Cost-Benefit Analysis; Discrete Choice Methods; Survey Research; Advanced Quantitative Methods
- Applied Field Experience (3 credits)
- Policy Research Practicum I, II (6 credits)
- 3 courses in area of concentration (9 credits)
- 3 additional elective courses (9 credits)

Stuart Shapiro

*Director, Program in
Public Policy*



“A degree in public policy is a gateway into the world of public service. There is no more exciting time to be entering public service as vigorous debates are under way in a wide variety of policy areas. Many of our students want to take part in those debates and come to the Bloustein School hoping to make the world a better place. We are here to help them do so.”

Concentrations

As part of the elective selections, students must develop a three-course (9-credit) concentration in a substantive policy area. The Bloustein faculty is recognized for its policy expertise in community development and social policy, along with the other areas of concentration. Students also may design their own concentrations, and do so frequently.

- Analytical Methods
- Budget and Finance*
- Community Development
- Economic Analysis
- Education
- Environment
- Health
- Labor and Workforce
- Management
- Non-Profit Management*
- Political Processes and Institutions
- Social and Gender Policy

**These concentrations include coursework at the Bloustein School and at the School of Public Affairs and Administration, Rutgers-Newark*



Allison Harris

MPP 2006

*PhD student in
political science,
University of Chicago*

“One of the best
parts of being at
the Bloustein School

was the close relationship I developed with faculty members, who are leaders in their fields yet very accessible and supportive of the students. It is through these relationships that I was able to find out about both of the jobs that I have had since graduating. It is also because of these relationships that I am in the doctoral program in political science. I may never have considered furthering my education in this way if not for the Bloustein faculty members who inspired and believed in me.”

Leah Apgar

MPP 2007

*Loan Officer, New
Jersey Community
Capital, Trenton, NJ*



“I chose the
Bloustein School

because of the quality of both its curriculum and faculty. I really liked the opportunity to work closely with that faculty and the interactive nature of the courses. Few of the professors rely primarily on lectures: the classes include extensive discussions to facilitate the learning process, as well as field visits and talks by practitioners, to make the knowledge very practical. One of my favorite memories was a class visit to Bethex Federal Credit Union, where we learned about its partnership with a check-cashing service, in order to bring low-income individuals in the Bronx access to basic financial services.”

MASTER OF PUBLIC AFFAIRS AND POLITICS (MPAP)

The Master of Public Affairs and Politics (MPAP) degree is a 30-credit program designed for students with significant work experience in

public affairs and politics (generally at least five years). The MPAP is typically a one-year degree for full-time students, but students also may pursue it on a part-time basis.



Required Course of Study (30 credits)

- Public Policy Formation (3 credits)
- Methods I: Research Design (3 credits)
- Methods II: Data Analysis (3 credits)
- Economics and Public Policy (3 credits)
- Elective courses (18 credits):
Electives include the legislative process, negotiation and conflict resolution, ethics, education policy, labor policy, the media, public policy advocacy, and social policy.
Students may choose among a wide array of courses offered by faculty and practitioners in the Public Policy Program, in other programs in the Bloustein School, elsewhere at Rutgers University, or even at other area universities through special arrangement.





DUAL DEGREE PROGRAMS

In addition to the Master of Public Policy (MPP) and the Master of Public Affairs and Politics (MPAP) degrees, the Bloustein School also offers a combined MPP/MCRP joint program with the Bloustein School's Program in Urban

Planning and Policy Development; an MPAP/JD degree with the Rutgers School of Law at Camden and Newark; an MPP/MBA joint program with the Rutgers Business School; an MPP/BA or BS degree with the School of Arts and Sciences or the School of Environmental and Biological Sciences, and an MPP/MPH with the UMNDJ School of Public Health.

MASTER OF PUBLIC POLICY/MASTER OF CITY AND REGIONAL PLANNING (MPP/MCRP)

This program leads to completion of both the Master of Public Policy and Master of City and Regional Planning degrees in three years.

MASTER OF PUBLIC AFFAIRS AND POLITICS/JURIS DOCTOR (MPAP/JD)

This program leads to completion of both a Master of Public Affairs and Politics and a law degree in three-and-a-half years. The program includes two-and-a-half years of law study at the Rutgers School of Law in Camden or Newark, and one year at the Bloustein School studying politics and public policy.

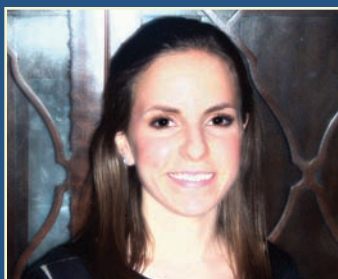


Eric Baum
MPP/MBA 2012
*Assistant Bank
Examiner, Federal
Reserve Bank
of New York*

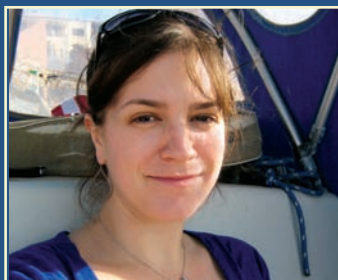
“My work includes an internal commissioning process that brings together economics and business studies from my dual-degree program at Rutgers. The Bloustein School emphasizes experiential learning, which enables students to learn by participating in a practicum and high-level internship rather than completing a graduate thesis. My experience at Bloustein gave me a foundation of skills that now enables me to fulfill my role as a central banker, a career step that exceeded my expectations for my graduate school experience.”

**Jessica
Godofsky
Starace**

MPP 2011
*Research Assistant,
Princeton Survey
Research Associates
International (PSRAI),
Princeton, NJ*



“I was fortunate to have had the opportunity to work part-time at the school’s John J. Heldrich Center for Workforce Development while attending school full-time. As a graduate research assistant, I directed public opinion surveys and co-authored reports with professors Carl Van Horn and Cliff Zukin on the impact of the economic downturn on Americans who became unemployed during the recession, and on recent college graduates’ first full-time jobs and their perceived value of the college experience. Both studies were widely covered in the national media, including the front page of the *New York Times*, the *Huffington Post*, *Time*, NBC, CBS, and *Forbes*. It was an invaluable experience to participate in the research process from start to finish, as well as benefit from an incredible resume builder and conversation starter when networking.”



Sara Meyers

MPP 2009

*Presidential
Management Fellow
and Analyst in the
Office of Strategic
Planning and
Management, U.S.
Department of Housing
& Urban Development*

“The professors at the Bloustein School are extremely dedicated and experienced. I enjoyed the camaraderie with the other students, and the course selection is varied enough to support a wide range of policy interests. I also valued the opportunity to develop a personalized course of study and to work at three different research centers, each of which afforded me valuable new insight into data collection and analysis, both of which are critical skills in my current job.”

Paul Crupi

MPP 2011

*Policy Advisor,
Office of New
Jersey Governor
Chris Christie*



“I chose to attend the

Bloustein School because I knew I wanted to become involved in state policymaking. I had become active in local political organizations but desired to expand my network of contacts and also gain a better, more formal understanding of how policy is created and implemented in New Jersey. The diversity of ideas among my fellow students was an important aspect of the MPP program. My classmates came from various backgrounds, thus holding passionate viewpoints on a wide range of policy issues. The result was always a spirited debate that expanded my own perspectives on different issues.”

MASTER OF PUBLIC POLICY/MASTER OF BUSINESS ADMINISTRATION (MPP/MBA)

This program leads to completion of both Master of Public Policy and Master of Business Administration degrees in three years. The program includes a year and a half studying business at Rutgers Business School in Newark and a year and a half studying policy at the Bloustein School.

MASTER OF PUBLIC POLICY/BACHELOR OF ARTS OR SCIENCES (MPP/BA OR MPP/BS)

This program leads to completion of both the Bachelor of Arts or Sciences and Master of Public Policy degrees in five years. Students may apply for admission to the joint program in February of their junior year. Admitted students are allowed to take up to 18 graduate credits in the Program in Public Policy over the course of their senior year; these credits are applied to both degrees. Upon completion of the BA or BS degree, students advance into the second year of the MPP program.

MASTER OF PUBLIC POLICY/MASTER OF PUBLIC HEALTH (MPP/MPH)

This joint program with the UMNDJ School of Public Health leads to the completion of both a Master of Public Policy degree and a Master of Public Health degree in three years.

Additional information about each of these programs can be found on the Bloustein School website at policy.rutgers.edu/academics/pp.



FACULTY

Bloustein School faculty publish in scholarly journals; serve as advisers to local, state, and federal governments; and are engaged in cutting-edge research that addresses many of today's most challenging issues. Below are the Program in Public Policy faculty; for a complete list of all Bloustein School faculty visit

policy.rutgers.edu/faculty/.

Joel Cantor, Professor

BA, Wisconsin; ScD, Johns Hopkins

— health care financing and delivery, health care policy, and access to health services by low-income populations.

Henry A. Coleman, Professor

BA, Morehouse College; MA, PhD, Princeton

— state and local finances, income redistribution, and labor force utilization.

Jocelyn Elise Crowley, Professor

BA, Cornell; MPP, Georgetown; PhD, Mass. Institute of Technology

— family and social policy, motherhood, workplace flexibility, women and politics, and methods.

Stephanie Curenton, Assistant Professor

BA, Wittenberg University; MA, PhD, University of Virginia

— education policy, early childhood education and intervention, workforce development for early childhood teachers, and language and social indicators of school readiness.

Norman J. Glickman, Professor

BA, MA, PhD, University of Pennsylvania

— community development, international and regional economic development, urban impact analysis, and urban and industrial policy.

Andrea Hetling, Assistant Professor

BA, Columbia University; Master of International Affairs, Columbia University; PhD, University of Maryland

— domestic social policies that address poverty, inequality, and violence.

Dawne Mouzon, Assistant Professor

BS, MA, PhD, Rutgers University; MPH, University of Medicine and Dentistry of New Jersey

— physical and mental health disparities, including the sub-disciplines of race, gender, and sociology of the family.

William Rodgers III, Professor

BA, Dartmouth College; MA, University of California, Santa Barbara; MA and PhD, Harvard University

— causes and consequences of economic and social inequality; skills gaps and skills shortages; the impact of macroeconomic policy on labor market outcomes; and the federal minimum wage and food security.

Julia Sass Rubin, Assistant Professor

AB, Harvard (Radcliffe); MBA, AM, PhD, Harvard

– community economic development, developmental finance, non-profit and hybrid organizational forms, social enterprise, and organizational behavior.

Hal Salzman, Professor

BA, University of California, Santa Cruz; MA, PhD, Brandeis

– workforce development and labor markets; effects of technological change; science and engineering workforce policy; and low-wage workers, internal labor markets, and corporate restructuring.

Joseph J. Seneca, Professor

BS, MA, PhD, University of Pennsylvania

– environmental policy and regulation; state and local economic development and finance.

Stuart Shapiro, Associate Professor

BS, Case Western Reserve; MPP, PhD, Harvard

– public administration and public policy, regulatory processes, civil-service issues, economics, quantitative methods.

Carl E. Van Horn, Professor

BA, Pittsburgh; MA, PhD, Ohio State (Political Science)

– employment policy, policy analysis and evaluation, public policy formation, state government and politics.

Cliff Zukin, Professor

BA, Oregon; MA, PhD, Ohio State (Political Science)

– mass media and American politics, public opinion and voting behavior, survey research.

CENTERS OF EXCELLENCE

Students in the Program in Public Policy are encouraged to work on real-world projects by becoming involved with many of the school's centers and institutes. The centers and institutes maximize the school's ability to perform in-depth research; extend its activities beyond the classroom through public service and outreach; and provide students with the opportunity to develop professional skills and experience. A selection of policy-related Centers is below; for a complete list, visit policy.rutgers.edu/centers.

Bloustein Local Government Research Center

Center for Energy, Economic & Environmental Policy

Center for Negotiation and Conflict Resolution

Center for Urban Policy Research

John J. Heldrich Center for Workforce Development

National Center for Neighborhood and Brownfields Redevelopment

Center for Transportation Safety, Security and Risk

Alan M. Voorhees Transportation Center

Ralph W. Voorhees Center for Civic Engagement

National Transit Institute

Rutgers Center for Green Building



Nakeefa Bernard

MPP 2010

*Development and
Communications
Associate, New
Jersey Community
Development
Corporation*

“As a proud resident of New Jersey I knew I wanted to pursue a career in service to New Jersey’s urban areas, but I was not entirely sure what my path would look like. I knew the Bloustein School would help me explore my career options, which eventually steered me in the direction of community development. The school’s faculty possess a passion for public service, a desire to effectively inform public policy, and a commitment to teaching—all of which had an immense impact on my life. They gave me the confidence and tools I needed to flourish into the community development professional that I am today.”

Maria DeFazio

MPP 2011

*Presidential
Management
Fellow,
Washington, D.C.*



The Bloustein School is a close-knit community that genuinely cares about making the world a better place. I always felt that above all, the faculty was teaching me to take what I learned in the classroom and go out into the world to make a difference. The most compelling part of the program is the way practical experience is tied back into academic learning. Applied field experiences and research practicums provide invaluable, real life experiences that employers are looking for and that are needed for success in the policy world. You stand out because of that experience.

OUTREACH

In addition to offering continuing education courses, technical assistance services, student field placements, internships, and various lecture series, the Bloustein School hosts international students through several exchange programs, including the University of Konstanz in Germany and the Bartlett School of Planning at University College London. The Korean Scholars Program, a partnership with the prestigious Korean Development Institute, allows scholars to achieve a one-year planning degree as part of their global master's course.

LOCATION

Located in New Brunswick, New Jersey, the Bloustein School is situated in one of the state's most concentrated areas of higher education and health care. The school's home, Civic Square, is a five-minute walk to the city's train station, which has Amtrak service between New York and Philadelphia, both a 45-minute ride away; Washington, D.C., and Boston are accessible in just a few hours. The station also has frequent NJ TRANSIT local service, including connections to Newark Liberty International Airport. The Bloustein School is within minutes of three of the state's major highways.

ADMISSION

Admission to the Bloustein School is competitive, and prospective students are evaluated on academic record as well as potential for success within the program. For additional information or to apply online, visit the school's website at policy.rutgers.edu/prospective.

RUTGERS

Edward J. Bloustein School
of Planning and Public Policy

**Edward J. Bloustein School of Planning and Public Policy
Rutgers, The State University of New Jersey**

33 Livingston Avenue, Suite 300

New Brunswick, NJ 08901-1981

Tel: 848-932-5475

Fax: 732-932-1771

policy.rutgers.edu

Email: recruit@policy.rutgers.edu

Rutgers, The State University of New Jersey, is dedicated by law and by purpose to serving all people on an equal and nondiscriminatory basis.