

Atlantic City

Municipal Public Access Plan

Submitted by: The City of Atlantic City

Date of Current Submittal: {Date}

Approved by the New Jersey Department of Environmental Protection:
{Date of NJDEP Approval}

Adoption by the City
{Date of Municipal Adoption}

Prepared By:
{Name, title, agency, address and phone number}

Approval of this plan does not eliminate the need for any Federal, State, County or municipal permits, certifications, authorizations or other approvals that may be required by the Applicant, nor shall the approval of this plan obligate the Department to issue any permits, certifications, authorizations or other approvals required for any project described in this plan.

Index

Introduction 3

I. Municipal Public Access Vision..... 5

II. Existing Public Access 7

III. Community Needs Assessment..... 10

IV. Implementation Plan 11

V. Resolution of Incorporation..... 17

APPENDIX 1 MPAP Required Sections per NJAC 8.11(e)..... 18

APPENDIX 2 Resolution for Incorporating MPAP into Master Plan 19

APPENDIX 3 Maps and Tables.....20

APPENDIX 4 Recreation and Open Space Inventory.....45

Introduction

The intent of this document is to provide a comprehensive public access plan for Atlantic City which lays out their vision for providing access to tidal waters and shorelines within the municipal boundary. This Municipal Public Access Plan (MPAP) was developed in accordance with N.J.A.C. 7:7E-8.11 and in collaboration with the New Jersey Department of Environmental Protection (NJDEP), and has been approved by the NJDEP. The development and implementation of this MPAP supports the policy of local determination of public access locations and facilities, while safeguarding regulatory flexibility and potential funding opportunities for Atlantic City.

Public rights of access to and use of the tidal shorelines and waters, including the ocean, bays, and tidal rivers, in New Jersey are founded in the Public Trust Doctrine. First set by the Roman Emperor Justinian around A.D. 500 as part of Roman civil law, the Public Trust Doctrine establishes the public's right to full use of the seashore as declared in the following quotation from Book II of the Institutes of Justinian:

"By the law of nature these things are common to all mankind – the air, running water, the sea, and consequently the shores of the sea. No one, therefore, is forbidden to approach the seashore, provided that he respects habitations, monuments, and the buildings, which are not, like the sea, subject only to the law of nations."

Influenced by Roman civil law, the tenets of public trust were maintained through English common Law and adopted by the original 13 colonies. Following the American Revolution, the royal right to tidelands was vested to the 13 new states, then to each subsequent state, and has remained a part of public policy into the present time. Through various judicial decisions, the right of use upheld by the Public Trust Doctrine has been incorporated into many state constitutions and statutes, allowing the public the right to all lands, water and resources held in the public trust by the state, including those in New Jersey.

The NJDEP adopted new rules governing public access on November 5, 2012 that enable municipalities to develop and adopt MPAPs to govern public access within their municipality. This MPAP consists of an inventory of public access locations, plus plans to preserve and enhance access based on community needs and State standards.

On **{date}** representatives from Atlantic City met with NJDEP staff to begin the public access planning process. This plan was then developed in collaboration with the NJDEP, **{planning board, environmental commission, other boards, consultants, community groups that participated}** and was presented to the Planning Board on **{date}** and was approved for submission to the NJDEP on **{date}**. Upon receiving approval from the NJDEP on **{date}**, the MPAP was incorporated into the **{specify element}** Element of the Master Plan by resolution on **{date}**. Incorporation into the Master Plan, and final approval of this MPAP by the NJDEP, was recognized by Public Notice in the NJDEP Bulletin. All public access decisions made within Atlantic City will be consistent with this plan.

Authority for Municipal Public Access Plans

The authority for a municipality to develop a MPAP is derived from the Coastal Zone Management Rules, N.J.A.C. 7:7E, adopted by NJDEP on November 5, 2012. The premise of the authorization of Municipal Public Access Plans is that public access to tidal waters is fundamentally linked to local conditions. Municipalities have a better awareness and are more responsive to these conditions than a broader State “one size fits all” mandated public access plan.

The voluntary development of a MPAP by Atlantic City enables the municipality to better plan, implement, maintain, and improve the provision of public access for its residents and visitors. The MPAP will be incorporated into the *{specify element}* Element of the municipality’s Master Plan, in accordance with the Municipal Land Use Law (N.J.S.A 40:55D). The MPAP, as an official component of the municipal Master Plan, informs and/or identifies public access requirements associated with any proposed development or redevelopment project.

Upon approval of the MPAP by the Department and incorporation into the Master Plan, Atlantic City will be responsible for ensuring that public access to tidal waterways along the municipality’s shorelines is provided in accordance to this plan. For each new public access project, Atlantic City will provide NJDEP with a letter confirming its consistency with this MPAP. Any permit issued by the NJDEP will reflect this and ensure that public access requirements are satisfied in accordance to this plan. Per N.J.A.C. 7:7E -8.11(j)4, Atlantic City is required to submit a progress report on plan implementation to NJDEP within five (5) years from date of plan adoption.

The sections of this plan as indicated below are prescribed by the Coastal Zone Management Rules, N.J.A.C. 7:7E, adopted by NJDEP on November 5, 2012. See Appendix 1.

State of New Jersey Public Access Goals

Through the New Jersey Coastal Zone Management Rules (see N.J.A.C 7:7E-1.1 (c)), the State of New Jersey establishes a broad set of coastal protection goals, including the following specifically addressing public access.

- Effectively manage ocean and estuarine resources through sustainable recreational and commercial fisheries, as well as through the safe and environmentally sound use of coastal waters and beaches.
- Provide meaningful public access to and use of tidal waterways and their shores.
- Preserve public trust rights to tidal waterways and their shores.
- Preserve and enhance views of the coastal landscape to enrich aesthetic and cultural values and vital communities.
- The enhancement of public access by promoting adequate affordable public facilities and services.

- Create and enhance opportunities for public access to tidal waterways and their shores, on a non-discriminatory basis.
- Maintain all existing public access to, and along tidal waterways and their shores.
- Provide opportunities for public access to tidal waterways and their shores through new development.
- Provide public access that does not create conditions that may be reasonably expected to endanger public health and safety, damage the environment, or create significant homeland security vulnerability.

Atlantic City's Municipal Public Access Plan embraces and reflects these goals and will help preserve, protect, and enhance the public's ability to access the Public Trust lands which surround the City.

I. Municipal Public Access Vision

A. Overview of Municipality

1. Municipal Description

Atlantic City is located in Atlantic County in southeastern New Jersey on Absecon Island. It is located on the Atlantic Ocean and surrounded by bays and inlets. The City is just under 16 square miles, but of that only 2,624 acres are developable as 3,079 acres are water, 3,708 acres consist of wetlands, and roads and right-of-ways use up significant acreage as well. Of the developable area, land uses generally consist of commercial uses along the coast and high density residential neighborhoods towards the north.

The City was initially established as a "health resort" in 1854, marketing the supposed healing properties of the salt water and sea air. Tourists flocked to the City from Philadelphia and throughout the region. However, the unique draw of Atlantic City could not last forever. Similar to other urban areas, Atlantic City began to decline after World War II. With the increase of automobile travel and cheaper air travel, more resort areas became available. Additionally, with more suburban luxuries people no longer sought weekend escapes from the city. As an attempt to revitalize the City, gambling in Atlantic City was legalized in 1976. A 30-year building boom followed, with the opening of the Resorts Casino in 1978 and concluding with the opening of the Revel Casino in 2012. The development of the casinos greatly increased tourism; between 1978 and 1988 the number of annual visitors increased from 700,000 to over 33 million (Atlantic City Master Plan 2008). In recent years, the casino industry has faced increasing competition from new legal casinos in neighboring states, and several casinos in the City have closed as a result.

Maintaining its role as a tourist draw is necessary for the economic health of the City. As of 2010, the City had a year-round population of 39,558 and of the employed population, approximately 35% were employed in the leisure and hospitality sector. The City is also the most significant employment center in the region, with the casinos employing not only 23% of

the employed residents of the City but also a significant number of residents of neighboring municipalities.

Recognizing these developments, the City plans to return its emphasis to its largest natural asset, the waterfront, and make public access to the waterfront a priority. The City is already known for its Boardwalk but there is room to expand public access on the backside of the island along the bay and inlets. Additionally, in many areas the conditions on the Boardwalk itself can be improved.

The Casino Reinvestment Development Authority (CRDA) greatly influences the City. Since 2011, CRDA has controlled land use throughout Atlantic City's 1,700-acre Tourism District. Although CRDA relies on the Land Use Code of the City of Atlantic City as its zoning ordinance, it conducts all development project reviews and hearings. In 2012, CRDA developed a Tourism District Master Plan which covers much of the waterfront area. Currently, many oceanfront properties are zoned Resort Commercial Development or have specific redevelopment zoning designations. Other areas along the waterfront, especially towards the back of the island, are zoned residential.

In order for the CRDA initiatives outlined in the Tourism District Master Plan to succeed, more attention must be paid to public access to the waterfront. In addition, opportunities for access not included in the CRDA plan, such as along areas fronting the Back Bay, should be identified. The City's goal is to maintain and improve all existing public access points, create new public access where appropriate, and ensure that the location of waterfront access is better identified for residents and visitors.

2. Public Access Description

Public Access in Atlantic City is provided by the municipality and consists of a variety of access points and facilities. The majority of public access points are owned by the City. The largest access area is the 3.4-mile Boardwalk lining the oceanfront. Along the Boardwalk, the City provides both visual and physical access to the beach, with ADA (Americans with Disabilities Act of 1990)-accessible ramps in some locations. During the tourist season, these beaches are protected by lifeguards. Some areas feature showers and bathroom facilities. Additional public access to the waterfront is located along the bays and inlets. Examples of existing non-Boardwalk public access include boat ramps, small boat launches, public parks fronting the waterway, and the AC Waterfront Sculpture Walk, managed by CRDA. The overall goal of this MPAP is to establish Atlantic City's plan to maintain and enhance all existing public access locations to and along tidal waterways and their shores.

3. Map 1 Atlantic City Tidal Waterways and Lands

This map shows all the tidal waterways within the municipality and all lands held by the municipality and may be found in Appendix 3.

B. Municipal Public Access Goals and Objectives

As part of the planning process, this MPAP has been reviewed and is consistent with the following goals/elements/policies established in Atlantic City's 2008 Master Plan:

Land Use Element

- The City, once known as the Queen of Resorts, should provide land use planning to diversify its tourism economy and realize its true potential as a world-class resort area.
- Protect the City's natural resources – the beach, the wetlands, and the Back Bay environment in conjunction with sound development practices.

Open Space and Recreation Element

- Provide both passive and active recreational opportunities that are safe and accessible for all residents and visitors and meet the needs of the present community.
- Provide all segments of the population opportunities for outdoor recreation experiences and improved quality of life.

Conservation Element

- Preserve environmentally sensitive land and natural features such as wetlands, beaches, unique ecology, and prime wildlife habitats.

In addition to those goals outlined within the Master Plan and the State-required goals, Atlantic City establishes the following as goals specifically for public access:

1. Maintain all existing public access to the maximum extent practicable.
2. Maintain safe and adequate access locations for fishing.
3. Provide clear informative signage for access locations.
4. Improve and increase public access locations along the Back Bay and on other areas away from the Boardwalk.
5. Promote and advertise public access to increase tourism.

II. Existing Public Access

A. Public Access Locations

Map 2 Atlantic City Public Access Locations, identifies an inventory of all public access locations within Atlantic City, notes whether they are currently Utilized, Restricted, or Unutilized, and notes key information about improvements and activities. See **Table 1**, which provides detailed information needed for each location. Both may be found in Appendix 3.

B. Improved Public Access Locations

Map 3 Handicapped Accessible Points and **Map 4.1 Restroom Availability** provide an inventory of the improved existing public access locations that provide access to public trust lands and

waters. See **Table 1** which provides detailed information on each location. Both may be found in Appendix 3.

C. Limitations to Public Access

The following limitations to public access in Atlantic City currently exist:

- Lack of restrooms at some locations, or restrooms closed
- Inadequate signage makes it unclear which activities are permitted or prohibited at access points
- Destroyed portions of the Boardwalk along Absecon Inlet diminish connectivity between access points (see Image 1)
- Some access points are visually or physically obstructed by debris (see Image 2)
- Some access points are fenced off or marked with “No Trespassing” signs (see Image 3)
- Some access points are being used to store private vehicles and boats (see Image 4)

1. Temporary Restrictions

- Beaches are closed from 10PM-6AM
- Swimming and bathing are not permitted in ocean water adjacent to and bounding the beaches from 10PM-6AM
- Ball games, Frisbee, and catch are not permitted on the Boardwalk and beach between June 15 and September 15

2. Permanent Restrictions

- Access under the Boardwalk is restricted to City personnel, City contractors, and medical or law enforcement personnel responding to an emergency
- Swimming is restricted at unprotected beaches
- Sand dunes (a sensitive ecosystem) are restricted from public access
- Swimming is permanently restricted at many non-beach sites for safety reasons



Image 1: Destroyed Boardwalk section



Image 2: Debris covering access point



Image 3: No trespassing sign near access point



Image 4: Private vehicle and boat blocking access point

III. Community Needs Assessment

Atlantic City has performed a community needs assessment. The methods and results are described in the following section:

Community Needs were established by combining the results of community input from past planning efforts with the feedback obtained from a community meeting held at the Atlantic City Aquarium on September 29, 2014 as part of the Rutgers University Bloustein School Atlantic City Waterfront Access and Revitalization Plan planning process.

Overall, it was established at this meeting that the public views the waterfront as a City asset and many participants stated that it could be used to attract businesses. Participants valued the City's free beaches along the Boardwalk and the Inlet as a location for boaters. However, participants did note some weaknesses, and made the following suggestions for improvement:

Viewshed Protection and Enhancement: In many places, the ocean and beach cannot be viewed from the street because of the large-scale buildings along the waterfront. With future development, the public would like to see viewsheds protected and creative architecture used to prevent a "wall of buildings" from rising along the oceanfront. Additionally, the sand dunes limit views to the ocean from the Boardwalk. A potential remedy could involve the installation of viewing platforms or areas with increased visibility along the Boardwalk.

Improved Bicycle Access: There is insufficient bike access around the City and especially to and from points along the waterfront. Biking hours on the Boardwalk are very limited, and some members of the public would like to see them relaxed. A need for increased bike parking along the Boardwalk was also found.

Boardwalk Improvements: Repairs and improvements to the northern section of the Boardwalk to extend it to Gardner's Basin have been planned; the public would like to see these repairs completed.

Cleanliness: The beach is often perceived as dirty, and fishing areas along the Back Bay and inlets need trash cans and fish preparation stations to maintain cleanliness.

Added boat ramps: More boat ramps are desired throughout the City, especially small-boat launches.

Further community needs were identified through field observation. While inventorying public access sites, notes were taken on which areas were heavily used by the community, how they were used, and what if anything these areas were lacking. Especially along the Back Bay, many waterfront access areas appeared to be informally used. These areas had little to no improvements, but foot paths and often overflowing garbage receptacles made it clear they are heavily utilized by the public (see Image 5). In these areas, it is evident that improvements are necessary and access should be more formalized with better paths and infrastructure, as well as the addition of appropriate amenities.



Image 5: Overflowing garbage receptacle

IV. Implementation Plan

The City of Atlantic City has created an Implementation Plan composed of Priorities, Preservation of Public Access Locations, Signage, Proposed Access Improvements and Facilities, and Municipal Tools for Implementation as described in the following section:

A. Priorities

The City of Atlantic City developed the following priorities:

1. Maintain Existing Public Access

Atlantic City has a wealth of existing public access points connecting residents and visitors with its tidal waters and shorelines. As part of this MPAP, a comprehensive inventory of Atlantic City's public access points was conducted and the attributes and amenities of each point were recorded. The inventory documented 200 existing public access points. Some of these access points are currently well-maintained, some are not regularly maintained, and some are inaccessible to the public. This inventory should be updated every 3-5 years and compared to previous inventories to ensure that all public access points still exist and are still publicly accessible.

Access points are in danger of becoming inaccessible for a variety of reasons. Some points are not well-marked, some points have signage that suggests the point is privately owned, and some points are visually degraded. Based on criteria from the inventory, each point in danger of becoming inaccessible to the public will be further assessed and remediation efforts will be taken to maintain the access. As needed:

1. Adequate signage will be added
2. Misleading signage will be removed
3. Trash will be cleared
4. Vegetation will be managed
5. Paths and roadways within and leading to the access points will be cleared of debris

Access points not considered in danger will continue to be maintained as they currently are. The Atlantic City Public Works Department will carry out this work, except for access points within the Tourism District, which will be maintained by the CRDA Environmental Services department.

2. Planned Enhancement to Public Access Locations and/or Facilities

Some public access points are simply street ends with a view of the water, while others are improved sites with a range of amenities. Based on an assessment of community needs, it is appropriate for some of these access points to remain unimproved and exist simply as visual or physical connections to the water. Some sites and facilities, however, require enhancements to continue to serve public needs. These enhancements include:

1. Opening existing restroom facilities to the public during posted hours
2. Provide fish-cleaning facilities at popular fishing sites
3. Provide boat launches for small motorized and non-motorized watercraft where feasible
4. Add seating and picnicking amenities to bayside access points, where space permits
5. Plant shade trees on bayside waterfront sidewalks
6. Improve street end water access beyond visual access where feasible

B. Preservation of Public Access Locations

The City of Atlantic City developed the following preservation and conservation measures:

1. Preservation Measures

Atlantic City currently has a number of parks and recreation complexes listed on the NJDEP Green Acres Recreation and Open Space Inventory (ROSI) (See Appendix 4).

C. Signage

The City of Atlantic City has provided the following signage:

The public access inventory includes information about signage at each point. Parts of the Boardwalk are very clearly marked, with rules and amenities posted. Other access points lack signage that would indicate the area is open to the public. Other access points have private “No Trespassing” signs that could be interpreted to mean the access point is privately owned.

Successful existing City signage will be used as a model for adding signs to areas currently lacking any (see Image 6). All public access points will be marked as such, and hours, facilities/amenities, and permitted and restricted activities will be posted on these signs. Signs will be context-specific, but will follow a common template to indicate that all of the points are part of a unified public access system that is open to all members of the public. Any signs that could mislead the public into believing a public access point is private will be removed.



Image 6: Example of successful signage

D. Proposed Access Improvements and Facilities

The City of Atlantic City has proposed the following access improvements and facilities:

1. Improvement Project

The Seawall Project: Atlantic City is in the process of implementing the construction of a seawall, bulkhead, and new boardwalk along Absecon Inlet. The reconstructed boardwalk would provide pedestrian connectivity between the oceanfront and Gardner's Basin. The seawall will be constructed by the Army Corps of Engineers and will be federally funded, while boardwalk construction will be funded by Atlantic City and the State of New Jersey. This project is considered ongoing.

2. Improvement Project

Sunset Trail: The Bloustein Atlantic City Waterfront Access and Revitalization Plan proposes a pedestrian trail that would connect the entire bayside of the City, from the western end of South Boulevard in the Chelsea Heights neighborhood to the Farley State Marina, and Gardner's Basin. The trail will make use of existing City-owned pedestrian walkways where available, and will rely on the construction of additional walkways and supporting infrastructure as needed. The trail would provide about 5 miles of pedestrian connectivity and waterfront access, and provide a connection to the roughly four miles of existing and proposed Boardwalk.

E. Municipal Tools for Implementation

The City of Atlantic City has the following tools for the maintenance, enhancement and development of public access locations:

1. Maintenance Tools

- The Atlantic City Municipal Code § 163-63(C)(3) provides special protection for public access to the beaches in B Beach District, which comprises all natural public beaches along the Atlantic Ocean. A proposed use in this district shall not limit public access.
- The Atlantic City Municipal Code § 163-59(4) establishes the Mixed Use Recreation District to "integrate residential, commercial, cultural, transportation and transient *[sic]* oriented uses." The district encourages "[w]ater-based uses that provide alternative modes of transportation to other locations throughout the City" and the ordinance stresses that "[p]ublic access along the waterfront is a major component of the district plan, to provide a scenic venue and pedestrian links to the Walk."
- The Atlantic City Beach Patrol maintains a fleet of handicap "surf chairs" to facilitate beach access points with ADA-compliant beach ramps.

2. Enhancement Tools

- See Section F below for proposed Municipal Public Access Fund. These funds would be used to enhance existing public access sites.
- The 2008 Atlantic City Master Plan recommends to "[p]lan, design and install signage to direct and designate public beach access points and upgrade facilities such as shower head *[sic]* and restrooms at these locations."
- The 2008 Atlantic City Master Plan recommends to "[m]aintain and enhance existing public beach access points and continue to designate them."

3. Development Tools

- Current planning documents for Atlantic City (Storm Damage Mitigation Project 2012, Tourism District Master Plan 2012) support the development of new public access by extending the Boardwalk to Gardner's Basin.

- The 2008 Atlantic City Master Plan promotes “recreational activities along the back bay” and “partnerships with private property owners to provide access for canoeing and viewing wildlife and waterborne transportation.”
- The 2008 Atlantic City Master Plan recognizes that some “portion of Bader Field should be preserved as park/open space for community-wide utilization with access to the water and other attractions included on site.”

F. Municipal Public Access Fund

The City will establish a Municipal Public Access Fund to generate revenues that could be used for upgrading existing public access sites. Many of these sites could benefit from improved amenities, access and signage. The Municipal Public Access Fund will be structured along the following lines:

- The City will collect a fee from developers who build along the waterfront and deposit these revenues in the Municipal Public Access Fund. The payment will be a fee-in-lieu of providing on-site public access. As Atlantic City already has numerous existing public access sites, this arrangement will allow for the improvement of existing sites, rather than spreading resources too thinly over new *and* existing sites.
- Any funds generated from this fee must be spent on improvements mentioned in Atlantic City’s Municipal Public Access Plan.
- The fee must be paid once the developer’s permit application is approved by the NJDEP.
- The fee amount will be calculated according to the formulas found at N.J.A.C. 7:7E-8.11(f).

G. Implementation

The City has created an Implementation Schedule as follows:

1. Existing Maintenance

Current maintenance practices, schedules and funding mechanisms should be maintained.

2. Enhancements to Existing Locations

- The destroyed section of the Atlantic City Boardwalk (north of Oriental Avenue to Caspian Avenue) must be repaired and made available to the public. The Boardwalk is cited as a valuable public asset in the CRDA Tourism District Master Plan and the Atlantic City Bicycle and Pedestrian Plan.
- There are few public access points which provide proper facilities for small-boat access. Efforts should be made to install improvements for small-boat access in areas deemed safe and desirable. Numerous access points along the Back Bay fit this criteria. Small-boat access will not be installed in areas with heavy traffic from larger vessels, e.g., Delta Basin and other commercial fishing areas.

- In order to promote cleanliness and a better overall experience, popular fishing areas should contain proper amenities. This includes trash cans (which should be emptied routinely), gutting and cleaning stations, benches and tables.
- In order to promote the City's waterfront recreation opportunities, proper signage should be installed at public access locations. These signs should indicate that the access point is open to the public, as well as describe the permitted and restricted uses at the site.
- Visual access to public access points and their adjacent waters should be maintained or enhanced if necessary.
- The City will take steps to ensure that public access sites can be reached easily and safely. Depending on the site, this may include the following:
 - Bicycle and pedestrian improvements on approach streets.
 - Providing additional parking nearby, or adjusting parking regulations to permit on-street parking.
 - Ensuring the facilities at the access point are maintained and safe.
 - All public access point facilities and their approaches should be fully ADA-compliant.

3. Proposed Locations and Facilities

The Bloustein Atlantic City Waterfront Access and Revitalization Plan presents detailed project proposals and their respective timeframes. Brief synopses of the projects are below:

1. Garden Pier – Museum and historic village.
2. Fisherman's Park – Farmer's market, improved Baltic Avenue Drainage Canal outflow in park.
3. Gardner's Basin – Residential, commercial, and hotel, along with a waterfront park and access trail.
4. Carson's Point – Hotel with public swimming basin, floating dock, and small marina.
5. Delta Basin – Public park, fishing amenities.
6. Fairmount Harbor – Residential, commercial, and recreational development, with a new park and fishing and pedestrian amenities.
7. Bader Field – Campground, boat ramp, sports fields and other sports facilities.
8. Black Horse Pike Marina – Bathrooms, showers, small-boat rental, docks, fueling and pumpout facilities.
9. Gateway - "Pop-up" commercial uses, movie theater, bathroom and changing station.
10. Boardwalk Plaza – Retail with open space, pedestrian walkway, and arts showcase.

H. Army Corps of Engineers Requirements for Shore Protection Projects

The large waterfront section along Absecon Inlet is part of a U.S. Army Corps of Engineers Flood and Coastal Storm Damage Reduction Project. This project includes constructing beachfill and replenishing it at regular intervals. The next replenishment is scheduled for 2016. However,

gaps in funding have caused previously planned replenishments to be scrapped or delayed. Additionally, a 0.3-mile long bulkhead is proposed for the waterfront along Absecon Inlet.

Future improvements to public access sites along Absecon Inlet should be planned taking into account the ongoing nature of these projects. Improvements to public access sites cannot interfere with beachfill replenishment efforts or the construction of the bulkhead along Absecon Inlet.

V. Resolution of Incorporation

The City of Atlantic City has approved a resolution for the incorporation of the MPAP. See Appendix 2 for the ***draft*** or ***final*** resolution.

APPENDIX 1

Municipal Public Access Plans Required Sections per NJAC 8.11 (e)

1. (e) 1 Statement describing overall **goal of the MPAP** and the **administrative mechanisms** (for example, conservation restrictions, easements, ordinances) that either are already in place, or that shall be put in place to ensure that the municipality will meet public access goals
2. (e) 2 Statement of **Consistency with...Master Plan**
3. (e) 3 Public access **needs assessment** that evaluates:
 - existing access locations and capacities
 - practical limitations (esp. parking and bathrooms)
 - alternatives to address any limitations determined to exist
 - need for additional locations
4. (e) 4 **Digital Map and Inventory** identifying...:
 - tidal waterways within municipality and adjacent lands held by municipality
 - existing and proposed public access ways
 - proposed public access facilities
 - identified facilities compliant with ADA
5. (e) 5 **Implementation strategy**
 - forms of proposed public access responsive to needs assessment (i)
 - comprehensive list of specific public access projects and initiatives with implementation schedule (ii)
 - proposed tools to implement the plan, including (iii)
 - i. adoption or amendment of muni ordinances
 - ii. uses of monetary compensation (Public Access Fund), if any
 - proposed modifications to existing plans, ordinances & programs to implement MPAP (iv)
 - proposed compliance with ACOE requirements for shore protection projects [see 8.11(r)] (v)
 - cost of implementing, constructing and maintaining the access facilities proposed in the plan and specifies how this cost will be funded (vi)
 - implementation schedule (vii)
 - ordinances in place/to be adopted re signage requirements (viii)
 - measures to permanently protect public access per MPAP (ix)
 - examples/models of easements/restrictions for permanent protections (x)
 - draft resolution incorporating DEP-approved MPAP into a MP element (xi)

APPENDIX 2

Model Resolution for Incorporating MPAP into Master Plan

Resolution # _____

Title: A RESOLUTION APPROVING THE MUNICIPAL PUBLIC ACCESS PLAN

WHEREAS, the Atlantic City Municipal Public Access Plan was submitted to the ***{Township Council}*** and reviewed at the regular meeting of ***{date}***, and

WHEREAS, the governing body has approved the plan as submitted,

NOW, THEREFORE, BE IT RESOLVED by the ***{municipality governing body}*** of Atlantic City, the "Atlantic City Municipal Public Access Plan," a copy of which is attached, is hereby approved.

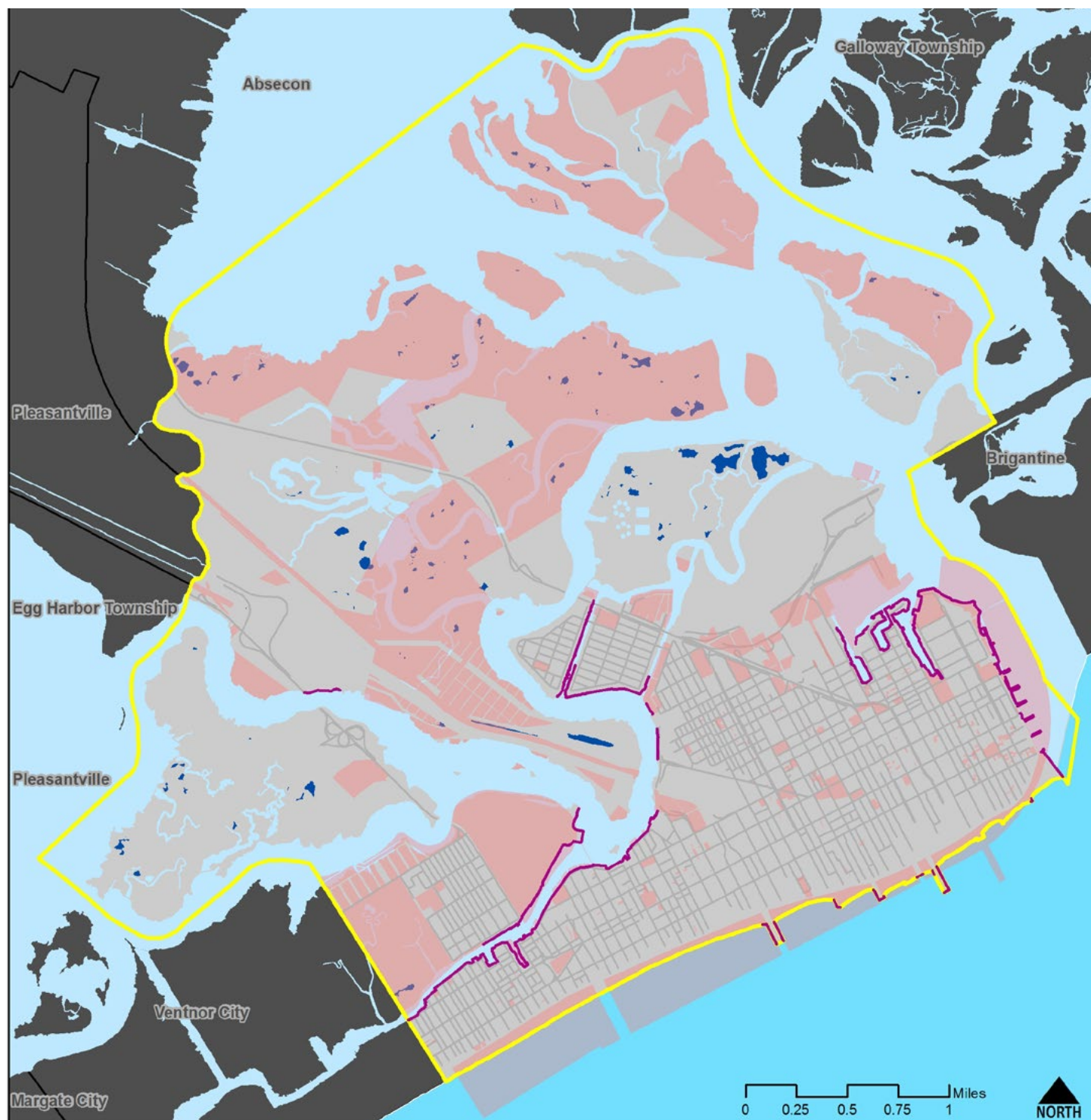
FURTHER RESOLVED a copy of the plan shall be sent to the New Jersey Department of Environmental Protection for review and approval in accordance with N.J.A.C.7.7 and 7.7E.

I hereby certify the foregoing to be a resolution adopted by the ***{governing body}*** at a meeting held on ***{date}***.

Municipal Clerk

APPENDIX 3: MAPS AND TABLES

Map 1. Atlantic City Tidal Waterways and Lands



General Legend

- Atlantic City roads
- Non-earthen shore
- Atlantic City tidal lands
- Publicly owned tidal lands
- Atlantic City boundary
- Neighboring municipalities

Tidal Waterways

- Ocean and coastline
- Other tidal waterways
- Lakes and ponds

Note: USGS non-earthen shore data observed to be inaccurate in some instances

Data Sources

Roads: NJDOT (2002)

Administrative boundaries: NJOIT-OGIS (2010)

Parcels: NJOIT-OGIS MODIV dataset (2013)

Waterways/shorlines: USGS, National Hydrography Dataset (downloaded October, 2014)

Tidal lands: NJDEP Draft Tidelands (2014)

Map 2. Existing Public Access Locations - Full Extent



Data Source: Aerial photography is the 2012-2013 High Resolution Orthophotography made available by the New Jersey Geographic Information Network.

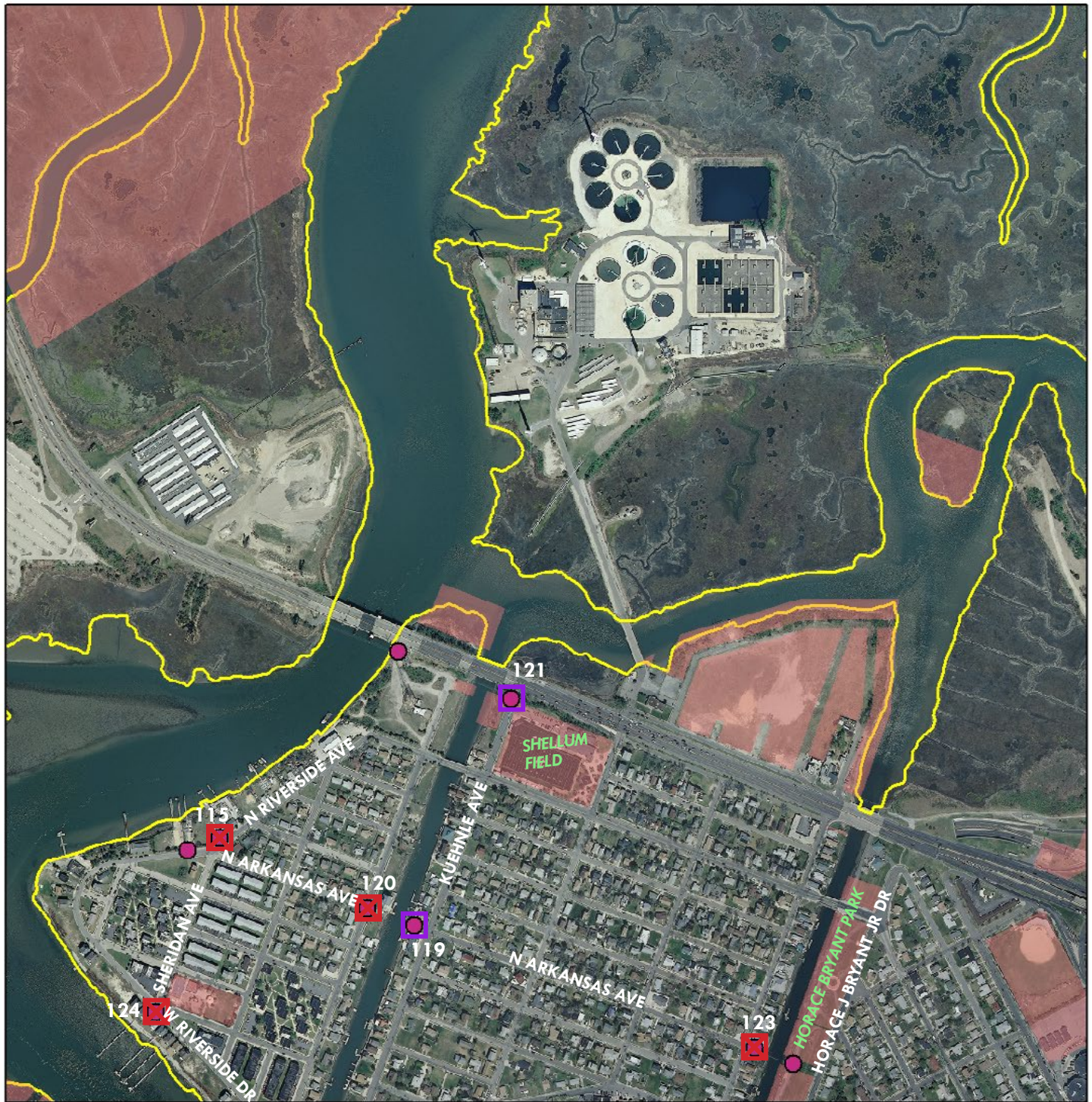
Point Dataset Collection: The set of access points herein displayed is an updated version of historical access point data dating from June 2011. This original dataset was verified, adjusted, and added to based on field work conducted in October, 2014.

NOTE

Unless otherwise noted, each access points should be considered utilized, meaning that the location is used by the public and provides official or unofficial public access.

ADDITIONAL LARGE-SCALE MAPS SHOWING ACCESS POINTS WITH STREET SIGNS FOLLOW IN MAPS 2.1-2.10.

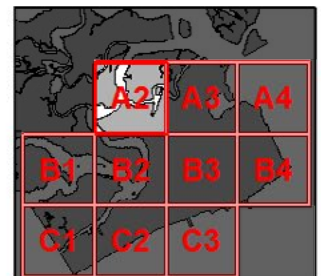
Map 2.1. Existing Public Access Locations - Section A2



- POINT 124:** private home
- POINT 123:** being used for boat storage by residents
- POINT 120:** being used for boat storage by residents
- POINT 115:** fenced off

Access Feature

- | | |
|---------------------|---------------------|
| ● Ocean (66) | ■ Dune Crossing |
| ● Boardwalk (55) | ⊗ Restricted point |
| ● Inlet (29) | □ Un-utilized point |
| ● Marina (2) | ■ Publicly owned |
| ● Bay or Canal (47) | □ Atlantic City |



Map 2.2. Existing Public Access Locations - Section A3

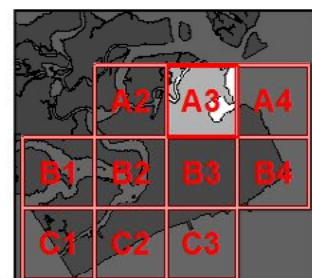


NORTH 0 165 330 660 990 1,320 Feet

- POINT 109: fenced off**
POINT 110: no trespassing sign, fenced off
POINT 108: confusing signage, no improvements

Access Feature

- | | |
|---------------------|---------------------|
| ● Ocean (66) | ■ Dune Crossing |
| ● Boardwalk (55) | ☒ Restricted point |
| ● Inlet (29) | ■ Un-utilized point |
| ● Marina (2) | ■ Publicly owned |
| ● Bay or Canal (47) | ■ Atlantic City |



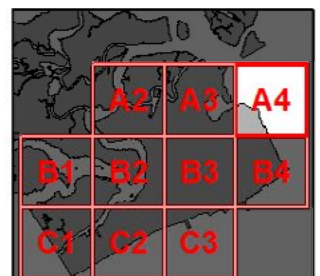
Map 2.3. Existing Public Access Locations - Section A4



POINT 94ST: ramp to boardwalk, former beach access closed

Access Feature

- | | |
|---------------------|---------------------|
| ● Ocean (66) | ■ Dune Crossing |
| ● Boardwalk (55) | ■ Restricted point |
| ● Inlet (29) | ■ Un-utilized point |
| ● Marina (2) | ■ Publicly owned |
| ● Bay or Canal (47) | ■ Atlantic City |

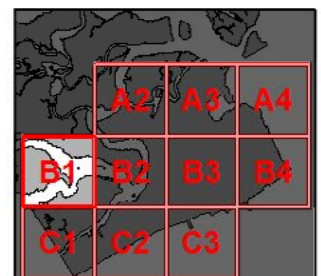


Map 2.4. Existing Public Access Locations - Section B1



Access Feature

- | | |
|---------------------|---------------------|
| ● Ocean (66) | ■ Dune Crossing |
| ● Boardwalk (55) | ⊠ Restricted point |
| ● Inlet (29) | □ Un-utilized point |
| ● Marina (2) | ■ Publicly owned |
| ● Bay or Canal (47) | □ Atlantic City |



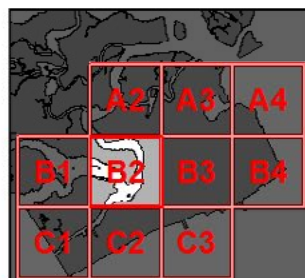
Map 2.5. Existing Public Access Locations - Section B2



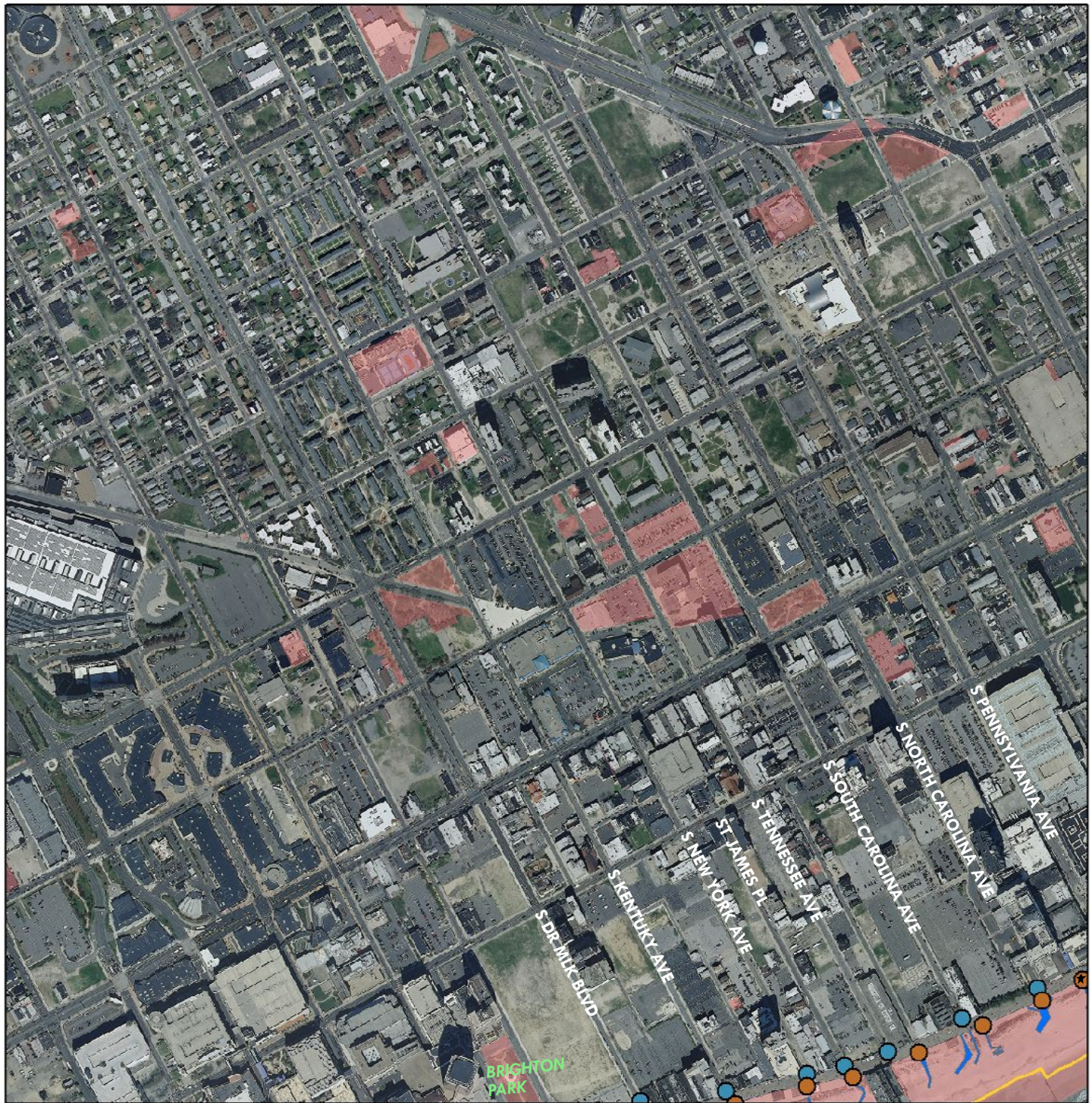
POINT 118: small boat access, private property sign

Access Feature

- | | |
|---------------------|---------------------|
| ● Ocean (66) | ■ Dune Crossing |
| ● Boardwalk (55) | ⊠ Restricted point |
| ● Inlet (29) | □ Un-utilized point |
| ● Marina (2) | ■ Publicly owned |
| ● Bay or Canal (47) | □ Atlantic City |

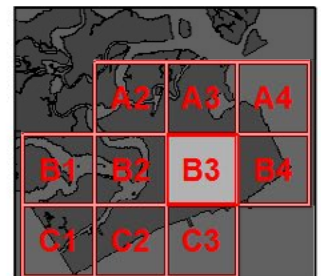


Map 2.6. Existing Public Access Locations - Section B3

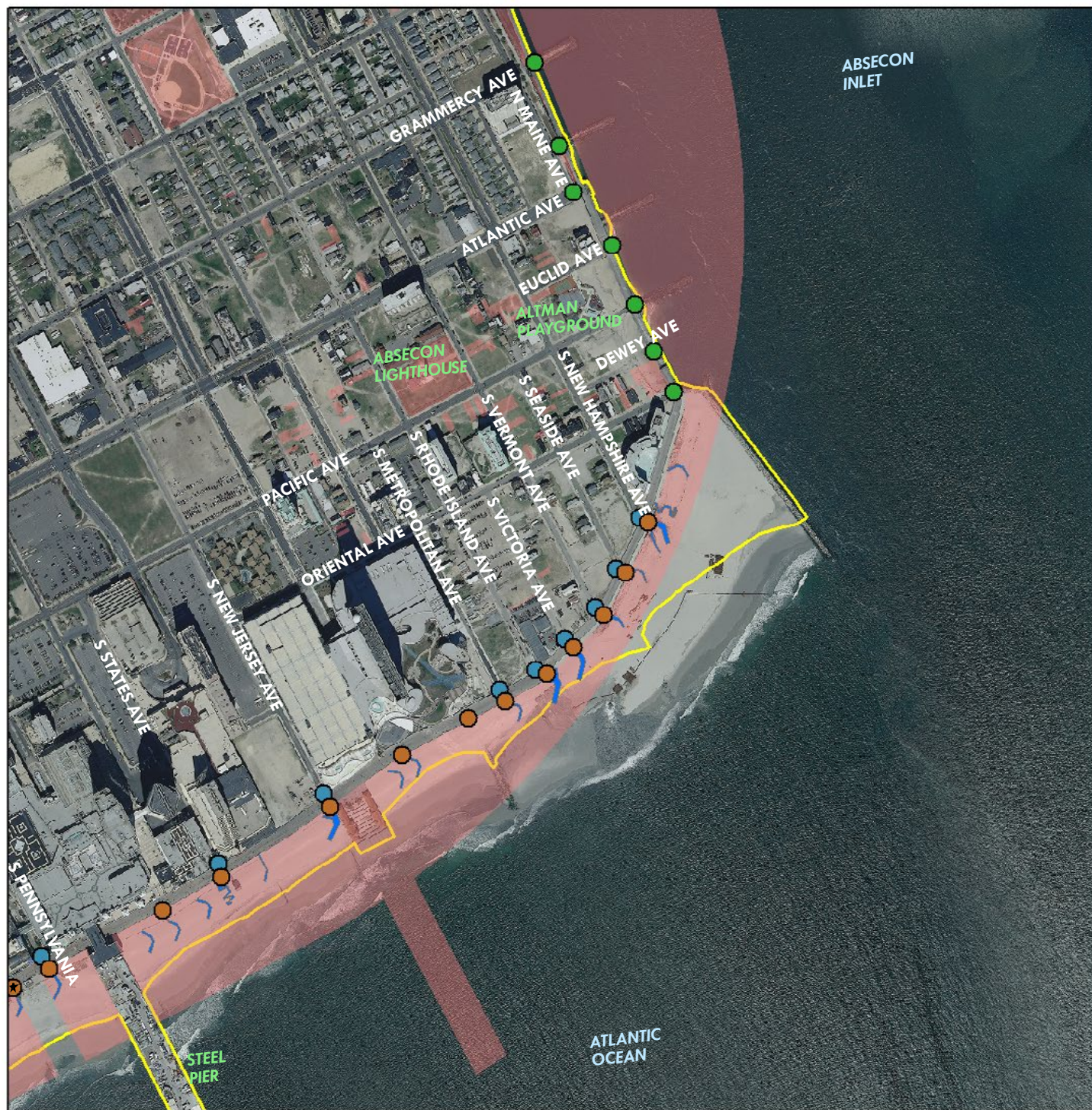


Access Feature

- | | |
|---------------------|---------------------|
| ● Ocean (66) | ■ Dune Crossing |
| ● Boardwalk (55) | ⊠ Restricted point |
| ● Inlet (29) | □ Un-utilized point |
| ● Marina (2) | ■ Publicly owned |
| ● Bay or Canal (47) | ■ Atlantic City |

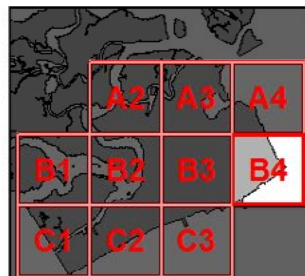


Map 2.7. Existing Public Access Locations - Section B4



Access Feature

- | | |
|---------------------|---------------------|
| ● Ocean (66) | ■ Dune Crossing |
| ● Boardwalk (55) | ⊠ Restricted point |
| ● Inlet (29) | □ Un-utilized point |
| ● Marina (2) | ■ Publicly owned |
| ● Bay or Canal (47) | □ Atlantic City |



Map 2.8. Existing Public Access Locations - Section C1

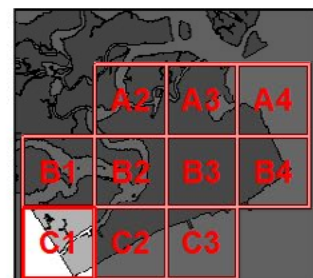


0 165 330 660 990 1,320 Feet

POINT 143: dock behind dense residential area, no trespassing sign


Access Feature

- | | |
|-------------------|-------------------|
| Ocean (66) | Dune Crossing |
| Boardwalk (55) | Restricted point |
| Inlet (29) | Un-utilized point |
| Marina (2) | Publicly owned |
| Bay or Canal (47) | Atlantic City |













Map 2.9. Existing Public Access Locations - Section C2

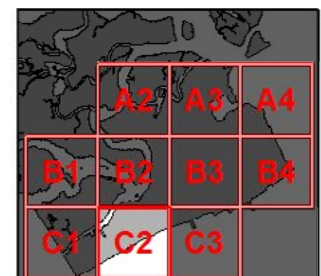


 **POINT 142: dock behind dense residential area, no trespassing sign**

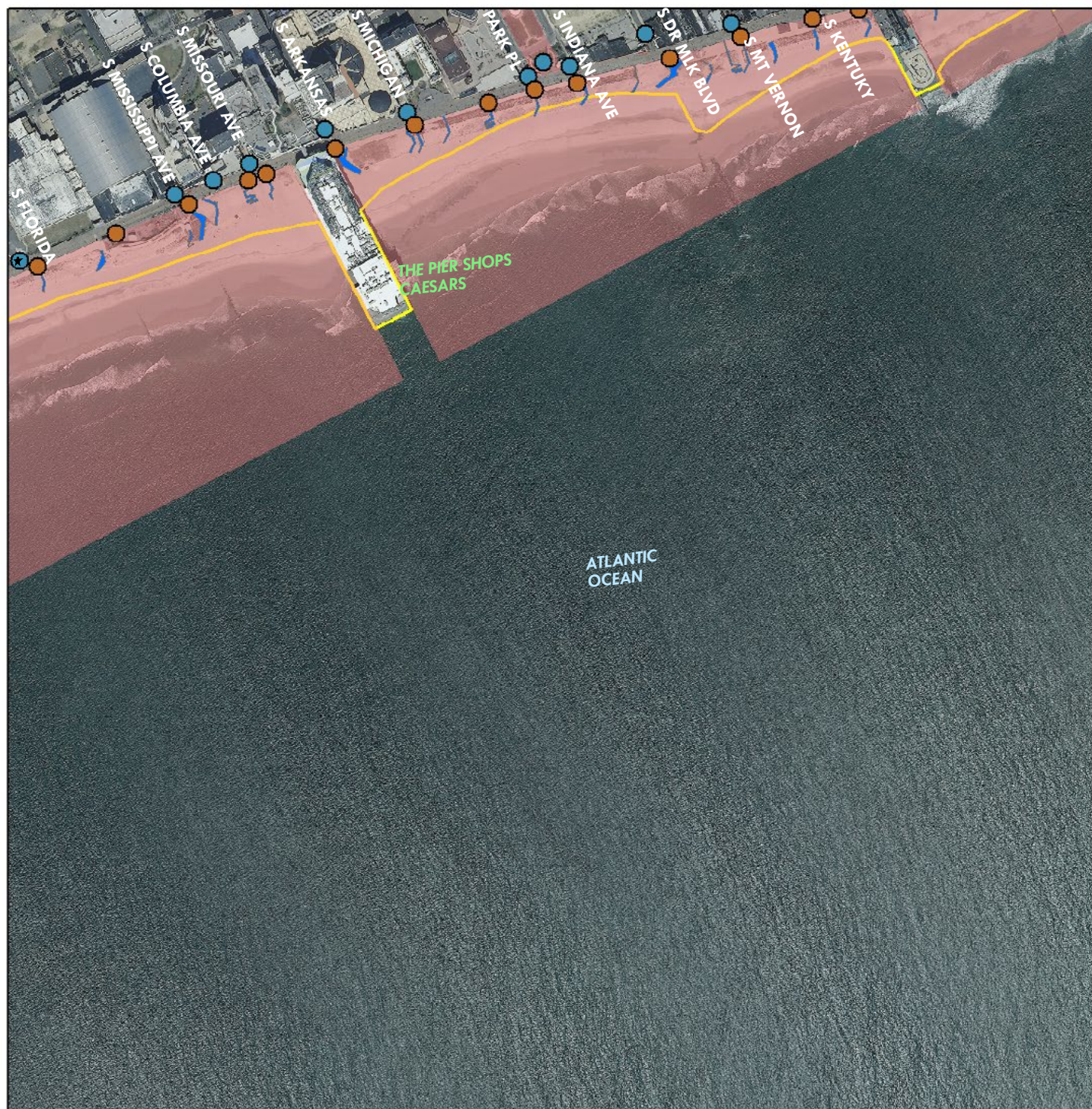
POINT 52BE: restricted to AC Beach Patrol

Access Feature

- | | |
|---|---|
|  Ocean (66) |  Dune Crossing |
|  Boardwalk (55) |  Restricted point |
|  Inlet (29) |  Un-utilized point |
|  Marina (2) |  Publicly owned |
|  Bay or Canal (47) |  Atlantic City |

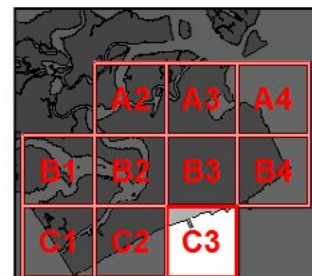


Map 2.10. Existing Public Access Locations - Section C3



Access Feature

- | | |
|---------------------|---------------------|
| ● Ocean (66) | ■ Dune Crossing |
| ● Boardwalk (55) | ⊠ Restricted point |
| ● Inlet (29) | □ Un-utilized point |
| ● Marina (2) | ■ Publicly owned |
| ● Bay or Canal (47) | ■ Atlantic City |



Map 3. Existing Public Access Locations - HANDICAPPED ACCESSIBLE POINTS



Map 4.1. Existing Public Access Locations - RESTROOM AVAILABILITY



Map 4.2. Existing Public Access Locations - SWIMMING ALLOWED**NOTE**

Restricted points along Absecon Inlet: Swim at Own Risk

Restricted points along Ocean Beach: Beach Patrol Only

Map 4.3. Existing Public Access Locations - SURFING ALLOWED



Map 4.4. Existing Public Access Locations - FISHING ALLOWED

Map 4.5. Existing Public Access Locations - NEARBY PARKING

Map 5.1. Prioritizing Public Access Locations - PROXIMITY TO INLAND PARKS

Map 5.2 Prioritizing Public Access Locations - SIGNAGE

Map 5.3. Prioritizing Public Access Locations - DISPERSION OF CURRENT USES

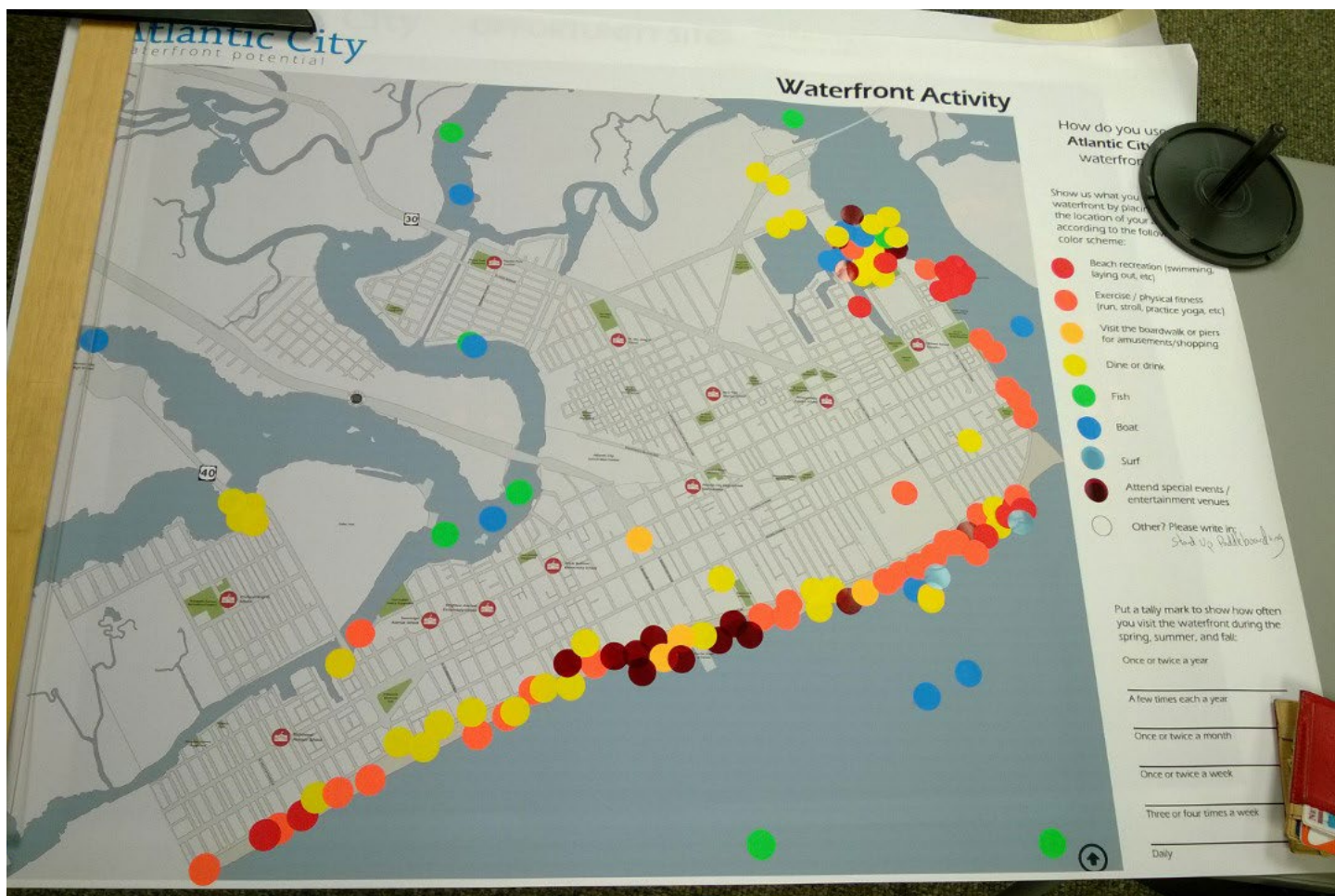


Table 1 Atlantic City Public Access Location Amenities

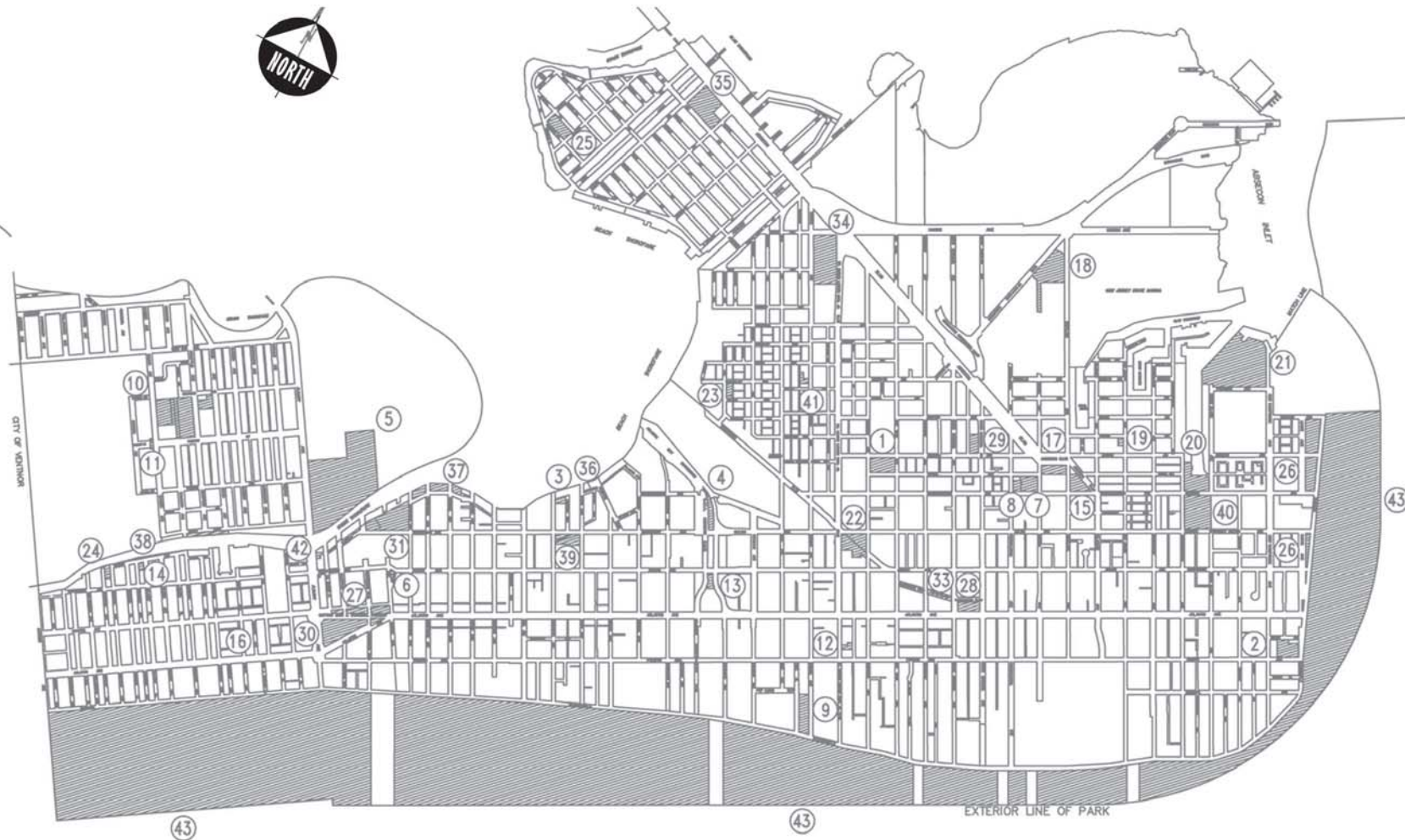
| ID | SIGNS | PARKING | STREET | BADGE | SWIM-MING | FISH-ING | SURF-ING | PLAY-GRD | PARK | BOAT-LNCH | MAR-INA | FOOD-DRINK | REST-RMS | SEATS | H_C | SHORE-LINE | TYPE |
|-----|-------|-----------|---------------|-------|-----------|----------|----------|----------|------|-----------|---------|------------|----------|---------|-----|------------|----------|
| 1 | NO | NO | Annapolis | NO | NO | YES | NO | NO | NO | NO | NO | NO | NO | NO | NO | Bay | Physical |
| 9 | NO | No Charge | Delancy | NO | NO | YES | NO | NO | YES | NO | NO | NO | NO | NO | NO | Bay | Visual |
| 10 | NO | No Charge | Columbia | NO | NO | YES | NO | NO | YES | NO | NO | NO | NO | NO | NO | Bay | Visual |
| 13 | NO | No Charge | Kingston | NO | NO | YES | NO | NO | YES | NO | NO | NO | NO | NO | NO | Bay | Visual |
| 14 | NO | No Charge | Aberdeen | NO | NO | YES | NO | YES | YES | NO | NO | NO | NO | Benches | NO | Bay | Visual |
| 25 | NO | No Charge | Kingston | NO | NO | NO | NO | NO | NO | NO | NO | NO | NO | Benches | YES | Boardwalk | Physical |
| 26 | NO | No Charge | Bartram | NO | NO | NO | NO | NO | NO | NO | NO | NO | NO | Benches | YES | Boardwalk | Physical |
| 28 | NO | N/A | Columbia | NO | YES | YES | YES | NO | NO | NO | NO | NO | NO | Benches | YES | Ocean | Visual |
| 54 | NO | Charge | Park | NO | NO | NO | NO | NO | YES | NO | NO | YES | NO | Benches | YES | Boardwalk | Physical |
| 55 | NO | Charge | Indiana | NO | NO | NO | NO | NO | YES | NO | NO | YES | NO | Benches | YES | Boardwalk | Physical |
| 66 | YES | N/A | Connecticut | NO | YES | YES | YES | NO | NO | NO | NO | NO | NO | Benches | YES | Ocean | Physical |
| 67 | YES | N/A | Massachusetts | NO | YES | YES | YES | NO | NO | NO | NO | NO | NO | Benches | YES | Ocean | Physical |
| 76 | NO | No Charge | Atlantic | NO | NO | YES | NO | NO | YES | NO | NO | NO | NO | NO | NO | Inlet | Visual |
| 77 | NO | No Charge | Pacific | NO | NO | YES | NO | YES | YES | NO | NO | NO | NO | NO | NO | Inlet | Physical |
| 78 | NO | No Charge | Euclid | NO | NO | YES | NO | NO | YES | NO | NO | NO | NO | NO | NO | Inlet | Physical |
| 79 | NO | No Charge | Madison | NO | NO | NO | NO | NO | YES | NO | NO | NO | NO | NO | YES | Inlet | Visual |
| 80 | NO | No Charge | Melrose | NO | NO | NO | NO | NO | YES | NO | NO | NO | NO | Benches | YES | Inlet | Physical |
| 81 | NO | No Charge | Adriatic | NO | NO | NO | NO | NO | NO | NO | NO | NO | YES | Benches | NO | Inlet | Visual |
| 82 | NO | No Charge | Caspian | NO | NO | NO | NO | NO | YES | NO | NO | NO | NO | Benches | YES | Inlet | Physical |
| 90 | NO | No Charge | | NO | NO | NO | NO | YES | YES | NO | NO | NO | NO | YES | YES | Canal | Visual |
| 95 | NO | No Charge | Kuehnle | NO | NO | NO | NO | YES | YES | NO | NO | NO | NO | NO | NO | Bay | Visual |
| 98 | NO | No Charge | | NO | NO | NO | NO | NO | YES | NO | NO | NO | NO | NO | NO | Bay | NONE |
| 100 | NO | No Charge | Hartford | NO | NO | YES | NO | NO | NO | NO | NO | NO | NO | NO | YES | Bay | Visual |
| 101 | NO | No Charge | Saint Davids | NO | NO | YES | NO | NO | NO | NO | NO | NO | NO | NO | NO | Bay | Visual |
| 102 | NO | No Charge | Sovereign | NO | NO | YES | NO | YES | YES | NO | NO | NO | YES | NO | YES | Bay | Visual |
| 103 | NO | No Charge | Montpelier | NO | NO | YES | NO | NO | NO | NO | NO | NO | NO | YES | NO | Bay | Visual |
| 104 | NO | No Charge | Chelsea | NO | NO | YES | NO | NO | NO | NO | NO | NO | NO | NO | NO | Bay | Visual |
| 105 | NO | No Charge | Morris | NO | NO | YES | NO | NO | NO | NO | NO | NO | NO | NO | NO | Bay | Visual |
| 108 | NO | No Charge | Turnpike | NO | NO | NO | NO | NO | NO | NO | NO | NO | NO | NO | NO | Bay | Visual |
| 109 | NO | No Charge | Texas | NO | NO | YES | NO | NO | NO | NO | NO | NO | NO | NO | NO | Bay | Visual |
| 110 | NO | No Charge | Arizona | NO | NO | YES | NO | YES | YES | NO | NO | NO | NO | NO | NO | Bay | Visual |
| 111 | NO | No Charge | California | NO | NO | YES | NO | YES | YES | NO | NO | NO | NO | NO | YES | Bay | Visual |
| 112 | NO | No Charge | Georgia | NO | NO | YES | NO | NO | NO | NO | NO | NO | NO | NO | NO | Bay | Visual |
| 114 | YES | No Charge | | NO | NO | YES | NO | NO | YES | NO | NO | NO | YES | YES | YES | Inlet | Visual |
| 115 | NO | NO | | NO | NO | YES | NO | YES | YES | NO | NO | NO | NO | Benches | YES | Inlet | Visual |
| 116 | NO | No Charge | | NO | NO | YES | NO | YES | YES | NO | NO | NO | NO | NO | NO | Bay | Visual |
| 117 | NO | No Charge | | NO | NO | YES | NO | YES | YES | NO | NO | NO | YES | NO | YES | Bay | Visual |
| 118 | NO | NO | | NO | NO | NO | NO | NO | YES | NO | NO | NO | NO | NO | NO | Boardwalk | Physical |
| 121 | NO | N/A | Boston | NO | YES | YES | YES | NO | NO | NO | NO | NO | NO | Benches | YES | Ocean | Physical |
| 124 | NO | N/A | Jackson | NO | YES | YES | YES | NO | NO | NO | NO | NO | NO | Benches | NO | Ocean | Physical |
| 125 | YES | N/A | Montgomery | NO | YES | YES | YES | NO | NO | NO | NO | NO | NO | Benches | NO | Ocean | Physical |
| 126 | YES | N/A | Plaza | NO | YES | YES | YES | NO | NO | NO | NO | NO | NO | Benches | NO | Ocean | Physical |
| 127 | NO | N/A | Tallahassee | NO | YES | YES | YES | NO | NO | NO | NO | NO | NO | Benches | YES | Ocean | Physical |
| 128 | YES | N/A | Berkley | NO | YES | YES | YES | NO | NO | NO | NO | NO | NO | Benches | NO | Ocean | Physical |
| 129 | YES | N/A | Kingston | NO | Yes | YES | YES | NO | NO | NO | NO | NO | NO | Benches | NO | Ocean | Physical |
| 130 | NO | N/A | Bartram | NO | YES | YES | YES | NO | NO | NO | NO | NO | YES | Benches | YES | Ocean | Physical |
| 131 | NO | N/A | Delancy | NO | YES | YES | YES | NO | NO | NO | NO | NO | NO | Benches | NO | Ocean | Physical |
| 132 | YES | N/A | Raleigh | NO | YES | YES | YES | NO | NO | NO | NO | NO | NO | Benches | NO | Ocean | Physical |
| 133 | NO | N/A | midblock | NO | YES | YES | YES | NO | NO | NO | NO | NO | NO | Benches | YES | Ocean | Physical |
| 135 | YES | N/A | Richmond | NO | YES | YES | YES | NO | NO | NO | NO | NO | NO | Benches | NO | Ocean | Physical |
| 136 | YES | N/A | Annapolis | NO | YES | YES | YES | NO | NO | NO | NO | NO | NO | Benches | YES | Ocean | Physical |
| 137 | NO | N/A | Annapolis | NO | YES | YES | YES | NO | NO | NO | NO | NO | NO | Benches | NO | Ocean | Physical |
| 138 | YES | N/A | Dover | NO | YES | YES | YES | NO | NO | NO | NO | NO | NO | Benches | NO | Ocean | Physical |
| 139 | NO | N/A | Elberon | NO | YES | YES | YES | NO | NO | NO | NO | NO | NO | Benches | YES | Ocean | Physical |
| 140 | YES | N/A | Lincoln | NO | YES | YES | YES | NO | NO | NO | NO | NO | NO | Benches | YES | Ocean | Physical |
| 141 | YES | N/A | Roosevelt | NO | YES | YES | YES | NO | NO | NO | NO | NO | NO | Benches | NO | Ocean | Physical |
| 142 | NO | N/A | Albany | NO | YES | YES | YES | NO | NO | NO | NO | NO | NO | Benches | YES | Ocean | Physical |
| 143 | YES | N/A | Ridgeway | NO | YES | YES | YES | NO | NO | NO | NO | NO | NO | Benches | NO | Ocean | Physical |

| ID | SIGNS | PARKING | STREET | BADGE | SWIM-MING | FISH-ING | SURF-ING | PLAY-GRD | PARK | BOAT-LNCH | MAR-INA | FOOD-DRINK | REST-RMS | SEATS | H_C | SHORE-LINE | TYPE |
|-----|-------|-----------|------------------------|-------|-------------|----------|-------------|----------|------|-----------|---------|------------|----------|---------|-----|------------|------------|
| 144 | YES | N/A | bw Hartford & Wilson | NO | At Own Risk | YES | NO | NO | NO | NO | NO | NO | NO | Benches | NO | Ocean | Physical |
| 145 | YES | N/A | Wilson | NO | YES | YES | YES | NO | NO | NO | NO | NO | NO | Benches | NO | Ocean | Physical |
| 146 | YES | N/A | Providence | NO | YES | YES | YES | NO | NO | NO | NO | NO | NO | Benches | YES | Ocean | Physical |
| 147 | NO | N/A | bw Providence & Boston | NO | YES | YES | Yes | NO | NO | NO | NO | NO | NO | Benches | NO | Ocean | Physical |
| 148 | YES | N/A | Sovereign | NO | YES | YES | YES | NO | NO | NO | NO | NO | NO | Benches | NO | Ocean | Physical |
| 149 | YES | N/A | Montpelier | NO | YES | YES | YES | NO | NO | NO | NO | NO | NO | Benches | YES | Ocean | Physical |
| 151 | YES | N/A | Chelsea | NO | YES | YES | YES | NO | NO | NO | NO | NO | NO | Benches | YES | Ocean | Physical |
| 152 | NO | N/A | Morris | NO | YES | YES | YES | NO | NO | NO | NO | NO | NO | Benches | YES | Ocean | Physical |
| 153 | YES | N/A | Brighton | NO | YES | YES | YES | NO | NO | NO | NO | NO | NO | Benches | NO | Ocean | Physical |
| 154 | NO | N/A | | NO | YES | YES | YES | NO | NO | NO | NO | NO | NO | Benches | NO | Ocean | Physical |
| 155 | YES | N/A | Iowa | NO | YES | YES | YES | YES | NO | NO | NO | YES | NO | Benches | YES | Ocean | Physical |
| 156 | YES | N/A | California | NO | YES | YES | YES | YES | NO | NO | NO | YES | NO | Benches | YES | Ocean | Physical |
| 157 | NO | N/A | Texas | NO | Restrict ed | NO | Restrict ed | NO | NO | NO | NO | NO | NO | NO | NO | Ocean | Restricted |
| 158 | YES | N/A | Texas | NO | YES | YES | YES | NO | NO | NO | NO | NO | NO | NO | NO | Ocean | Physical |
| 159 | YES | N/A | Bellevue | NO | YES | YES | YES | NO | NO | NO | NO | NO | NO | Benches | YES | Ocean | Physical |
| 160 | YES | N/A | Florida | NO | YES | YES | YES | NO | NO | NO | NO | NO | NO | Benches | YES | Ocean | Physical |
| 161 | NO | N/A | | NO | YES | YES | YES | NO | NO | NO | NO | YES | YES | Benches | YES | Ocean | Physical |
| 162 | YES | N/A | Mississippi | NO | YES | YES | YES | NO | NO | NO | NO | YES | YES | Benches | YES | Ocean | Physical |
| 163 | NO | N/A | | NO | YES | YES | YES | NO | NO | NO | NO | YES | NO | Benches | YES | Ocean | Physical |
| 164 | YES | N/A | Missouri | NO | YES | YES | YES | NO | NO | NO | NO | YES | NO | Benches | NO | Ocean | Physical |
| 165 | NO | N/A | Arkansas | NO | YES | YES | YES | NO | NO | NO | NO | YES | NO | Benches | NO | Ocean | Physical |
| 166 | YES | N/A | Michigan | NO | YES | YES | YES | NO | NO | NO | NO | YES | NO | Benches | NO | Ocean | Physical |
| 167 | NO | N/A | Ohio | NO | At Own Risk | YES | NO | NO | NO | NO | NO | NO | NO | NO | YES | Ocean | Physical |
| 168 | YES | N/A | Park | NO | YES | YES | YES | NO | NO | NO | NO | YES | NO | Benches | YES | Ocean | Physical |
| 169 | YES | N/A | Indiana | NO | YES | YES | YES | NO | NO | NO | NO | YES | NO | Benches | NO | Ocean | Physical |
| 170 | YES | N/A | Dr Martin Luther King | NO | YES | YES | YES | NO | NO | NO | NO | YES | NO | Benches | YES | Ocean | Physical |
| 171 | YES | N/A | Kentucky | NO | YES | YES | YES | NO | NO | NO | NO | YES | NO | Benches | YES | Ocean | Physical |
| 172 | YES | N/A | New York | NO | YES | YES | YES | NO | NO | NO | NO | YES | YES | Benches | NO | Ocean | Physical |
| 173 | YES | N/A | St James Place | NO | YES | YES | YES | NO | NO | NO | NO | YES | YES | Benches | NO | Ocean | Physical |
| 174 | YES | N/A | Ocean | NO | YES | YES | YES | NO | NO | NO | NO | YES | NO | Benches | NO | Ocean | Physical |
| 175 | NO | N/A | South Carolina | NO | YES | YES | YES | NO | NO | NO | NO | YES | NO | Benches | YES | Ocean | Physical |
| 176 | NO | N/A | North Carolina | NO | YES | YES | YES | NO | NO | NO | NO | YES | NO | Benches | YES | Ocean | Physical |
| 177 | NO | N/A | | NO | YES | YES | YES | NO | NO | NO | NO | YES | NO | Benches | NO | Ocean | Physical |
| 178 | YES | N/A | Pennsylvania | NO | YES | YES | YES | NO | NO | NO | NO | YES | NO | Benches | NO | Ocean | Physical |
| 179 | NO | N/A | | NO | YES | YES | YES | NO | NO | NO | NO | YES | NO | Benches | NO | Ocean | Physical |
| 180 | YES | N/A | States | NO | YES | YES | YES | NO | NO | NO | NO | YES | NO | Benches | NO | Ocean | Physical |
| 183 | NO | N/A | New Jersey | NO | YES | YES | YES | NO | NO | NO | NO | NO | NO | Benches | YES | Ocean | Physical |
| 184 | YES | N/A | Metropolitan | NO | YES | YES | YES | NO | NO | NO | NO | NO | NO | Benches | NO | Ocean | Physical |
| 185 | YES | N/A | Rhode Island | NO | YES | YES | YES | NO | NO | NO | NO | NO | NO | Benches | NO | Ocean | Physical |
| 186 | NO | N/A | Victoria | NO | YES | YES | YES | NO | NO | NO | NO | NO | NO | Benches | YES | Ocean | Physical |
| 187 | NO | N/A | Vermont | NO | YES | YES | YES | NO | NO | NO | NO | NO | NO | Benches | NO | Ocean | Physical |
| 188 | NO | N/A | Seaside | NO | YES | YES | YES | NO | NO | NO | NO | NO | NO | Benches | NO | Ocean | Physical |
| 189 | NO | N/A | New Hampshire | NO | YES | YES | YES | NO | NO | NO | NO | NO | NO | Benches | YES | Ocean | Physical |
| 192 | NO | NO | Melrose | NO | Restrict ed | YES | NO | NO | YES | NO | NO | NO | NO | Benches | NO | Inlet | Physical |
| 193 | NO | No Charge | | NO | NO | NO | NO | NO | NO | NO | NO | NO | NO | Benches | NO | Inlet | Visual |
| 194 | NO | No Charge | Adriatic | NO | Restrict ed | YES | NO | NO | NO | NO | NO | NO | NO | Benches | NO | Inlet | Visual |
| 195 | NO | No Charge | | NO | NO | YES | NO | NO | NO | NO | NO | NO | NO | Benches | NO | Inlet | Physical |
| 196 | NO | NO | Caspian | NO | Restrict ed | YES | NO | NO | YES | NO | NO | NO | NO | NO | NO | Inlet | Physical |
| 197 | NO | No Charge | | NO | NO | YES | NO | NO | YES | NO | NO | NO | NO | NO | NO | Inlet | Physical |
| 198 | NO | No Charge | | NO | NO | YES | NO | NO | YES | NO | NO | NO | NO | NO | NO | Inlet | physical |
| 199 | NO | No Charge | | NO | NO | YES | NO | NO | YES | NO | NO | NO | NO | NO | NO | Inlet | Physical |
| 200 | NO | No Charge | | NO | NO | YES | NO | NO | YES | NO | NO | YES | YES | YES | YES | Inlet | Visual |

| ID | SIGNS | PARKING | STREET | BADGE | SWIM-MING | FISH-ING | SURF-ING | PLAY-GRD | PARK | BOAT-LNCH | MAR-INA | FOOD-DRINK | REST-RMS | SEATS | H_C | SHORE-LINE | TYPE |
|-----|-------|------------------|------------------------|-------|-------------|-------------|----------|----------|------|-----------|---------|------------|----------|---------|-----|------------|----------|
| 201 | NO | No Charge | | NO | NO | YES | NO | NO | YES | NO | NO | NO | NO | YES | YES | Inlet | Visual |
| 202 | NO | No Charge | | NO | NO | YES | NO | YES | YES | NO | NO | NO | NO | YES | YES | Inlet | visual |
| 204 | NO | NO | | NO | NO | YES | NO | YES | NO | NO | NO | NO | NO | YES | YES | Canal | Visual |
| 220 | NO | No Charge | | NO | NO | YES | NO | NO | NO | NO | NO | NO | NO | NO | NO | Bay | NONE |
| 221 | NO | No Charge | Arkansas and Riverside | NO | NO | NO | NO | NO | NO | NO | NO | NO | NO | NO | NO | Canal | Visual |
| 222 | NO | No Charge | Arkansas and Murray | NO | NO | NO | NO | NO | NO | NO | NO | NO | NO | NO | NO | Canal | NONE |
| 223 | NO | No Charge | Arkansas and Kuehnle | NO | NO | NO | NO | NO | NO | NO | NO | NO | NO | NO | NO | Canal | Visual |
| 224 | NO | No Charge | Penrose | NO | NO | YES | NO | NO | NO | NO | NO | NO | NO | NO | NO | Bay | Visual |
| 225 | NO | No Charge | | NO | NO | NO | NO | NO | NO | NO | YES | NO | NO | NO | NO | Bay | Visual |
| 226 | NO | No Charge | Harrahs | NO | NO | YES | NO | NO | NO | NO | NO | NO | NO | YES | YES | Inlet | Visual |
| 228 | NO | NO | Brigantine | NO | Restrict ed | YES | NO | NO | NO | YES | NO | NO | NO | NO | NO | Inlet | Physical |
| 229 | NO | No Charge | Huron | NO | Restrict ed | YES | NO | NO | NO | YES | NO | NO | NO | NO | NO | Inlet | Physical |
| 230 | NO | NO | | NO | NO | NO | NO | NO | NO | NO | YES | YES | YES | YES | YES | marina | Marina |
| 231 | NO | No Charge | New Jersey | NO | NO | YES | NO | NO | NO | NO | NO | NO | NO | NO | NO | marina | Visual |
| 232 | NO | No Charge | Delaware | NO | NO | NO | NO | NO | NO | NO | NO | NO | NO | NO | NO | Inlet | NONE |
| 233 | NO | No Charge | Magellan | NO | NO | NO | NO | NO | NO | NO | NO | NO | NO | NO | NO | Inlet | NONE |
| 234 | NO | No Charge | Brighton | NO | NO | NO | NO | NO | NO | NO | NO | NO | NO | NO | NO | Bay | Visual |
| 235 | NO | No Charge | Iowa | NO | NO | NO | NO | NO | NO | NO | NO | NO | NO | NO | YES | Bay | Visual |
| 236 | NO | Charge/No Charge | Dr Martin Luther King | NO | NO | NO | NO | NO | NO | NO | NO | NO | NO | NO | YES | Boardwalk | Physical |
| 237 | NO | Charge/No Charge | Kentucky | NO | NO | NO | NO | NO | NO | NO | NO | YES | NO | Benches | UES | Boardwalk | Physical |
| 238 | NO | Charge/No Charge | New York | NO | NO | NO | NO | NO | NO | NO | NO | YES | YES | Benches | YES | Boardwalk | Physical |
| 239 | NO | Charge/No Charge | Saint James | NO | NO | NO | NO | NO | NO | NO | NO | YES | YES | Benches | YES | Boardwalk | Physical |
| 240 | NO | No Charge | Tennessee | NO | NO | NO | NO | NO | NO | NO | NO | YES | NO | Benches | YES | Boardwalk | Physical |
| 241 | NO | Charge/No Charge | South Carolina | NO | NO | NO | NO | NO | NO | NO | NO | YES | NO | Benches | YES | Boardwalk | Physical |
| 242 | NO | No Charge | North Carolina | NO | NO | NO | NO | NO | NO | NO | NO | YES | NO | Benches | YES | Boardwalk | Physical |
| 243 | NO | Charge | Pennsylvania Ave | NO | NO | NO | NO | NO | NO | NO | NO | YES | NO | Benches | YES | Boardwalk | Physical |
| 244 | NO | Charge | States | NO | NO | NO | NO | NO | NO | NO | NO | YES | NO | Benches | YES | Boardwalk | Physical |
| 245 | NO | Charge | New Jersey | NO | NO | NO | NO | NO | NO | NO | NO | NO | NO | Benches | YES | Boardwalk | Physical |
| 246 | NO | No Charge | Metropolitan | NO | NO | NO | NO | NO | NO | NO | NO | NO | NO | Benches | YES | Boardwalk | Physical |
| 247 | NO | No Charge | Rhode Island | NO | NO | NO | NO | NO | NO | NO | NO | NO | NO | Benches | YES | Boardwalk | Physical |
| 248 | NO | No Charge | Victoria | NO | NO | NO | NO | NO | NO | NO | NO | NO | NO | Benches | YES | Boardwalk | Physical |
| 249 | NO | No Charge | Vermont | NO | NO | NO | NO | NO | NO | NO | NO | NO | NO | Benches | YES | Boardwalk | Physical |
| 250 | NO | No Charge | Seaside | NO | NO | NO | NO | NO | NO | NO | NO | NO | NO | Benches | YES | Boardwalk | Physical |
| 251 | NO | No Charge | New Hampshire | NO | NO | NO | NO | NO | NO | NO | NO | NO | NO | Benches | YES | Boardwalk | Physical |
| 252 | NO | No Charge | Oriental | NO | NO | YES | NO | NO | YES | NO | NO | NO | NO | NO | NO | Inlet | Physical |
| 253 | NO | No Charge | Dewey | NO | NO | Restrict ed | NO | NO | YES | NO | NO | NO | NO | NO | NO | Inlet | Physical |
| 254 | NO | No Charge | | NO | NO | YES | NO | NO | NO | NO | NO | NO | NO | NO | NO | Inlet | Visual |
| 255 | NO | No Charge | Grammercy | NO | NO | YES | NO | NO | NO | NO | NO | NO | NO | NO | YES | Inlet | Visual |
| 256 | NO | No Charge | Jackson | NO | NO | NO | NO | NO | NO | NO | NO | NO | NO | Benches | YES | Boardwalk | Physical |
| 257 | NO | NO | | NO | NO | NO | NO | NO | NO | NO | NO | NO | NO | Benches | YES | Boardwalk | Physical |
| 258 | NO | No Charge | Montgomery | NO | NO | NO | NO | NO | NO | NO | NO | NO | NO | Benches | YES | Boardwalk | Physical |
| 259 | NO | No Charge | Plaza | NO | NO | NO | NO | NO | NO | NO | NO | NO | NO | Benches | YES | Boardwalk | Physical |
| 260 | NO | No Charge | Tallahassee | NO | NO | NO | NO | NO | NO | NO | NO | NO | NO | Benches | Yes | Boardwalk | Physical |
| 261 | NO | No Charge | Delancy | NO | NO | NO | NO | NO | NO | NO | NO | NO | NO | Benches | YES | Boardwalk | Physical |
| 262 | NO | No Charge | Raleigh | NO | NO | NO | NO | NO | NO | NO | NO | NO | NO | Benches | YES | Boardwalk | Physical |
| 263 | NO | No Charge | Jackson | NO | NO | YES | NO | NO | NO | NO | NO | NO | NO | NO | YES | Bay | Visual |
| 264 | NO | No Charge | Montgomery | NO | NO | YES | NO | NO | NO | NO | NO | NO | NO | NO | NO | Bay | Visual |
| 265 | NO | No Charge | Plaza | NO | NO | YES | NO | NO | NO | NO | NO | NO | NO | Benches | NO | Bay | Visual |
| 266 | NO | No Charge | Tallahassee | NO | NO | YES | NO | YES | NO | NO | NO | NO | NO | Benches | NO | Bay | Visual |
| 267 | NO | No Charge | Bartram | NO | NO | YES | NO | NO | NO | NO | NO | NO | MO | NO | NO | Bay | Visual |
| 268 | NO | No Charge | Raleigh | NO | NO | YES | NO | NO | NO | NO | NO | NO | NO | NO | NO | Bay | Visual |
| 269 | NO | No Charge | Laclede | NO | NO | YES | NO | NO | NO | NO | NO | NO | NO | Benches | NO | Bay | Visual |

| ID | SIGNS | PARKING | STREET | BADGE | SWIM-MING | FISH-ING | SURF-ING | PLAY-GRD | PARK | BOAT-LNCH | MAR-INA | FOOD-DRINK | REST-RMS | SEATS | H_C | SHORE-LINE | TYPE |
|-----|-------|-----------|-------------|-------|-----------|----------|----------|----------|------|-----------|---------|------------|----------|---------|-----|------------|--------------|
| 270 | NO | No Charge | Richmond | NO | NO | YES | NO | NO | NO | NO | NO | NO | NO | Benches | NO | Bay | Visual |
| 271 | NO | NO | Annapolis | NO | NO | YES | NO | NO | NO | Private | NO | NO | NO | NO | NO | Bay | NONE |
| 272 | NO | No Charge | Richmond | NO | NO | YES | NO | NO | NO | NO | NO | NO | NO | NO | NO | Bay | Physical |
| 273 | NO | No Charge | Dover | NO | NO | YES | NO | NO | NO | NO | NO | NO | NO | NO | NO | Bay | Physical |
| 274 | NO | No Charge | Phyllis | NO | NO | YES | NO | NO | NO | NO | NO | NO | NO | NO | YES | Bay | Visual |
| 275 | NO | NO | Harrisburg | NO | NO | YES | NO | NO | NO | Private | NO | NO | NO | NO | YES | Bay | NONE |
| 276 | NO | No Charge | Trenton | NO | NO | YES | NO | NO | NO | NO | NO | NO | NO | NO | YES | Bay | Visual |
| 277 | NO | No Charge | Sunset | NO | NO | YES | NO | NO | YES | NO | NO | NO | NO | NO | YES | Bay | Visual |
| 278 | NO | No Charge | Richmond | NO | NO | NO | NO | NO | NO | NO | NO | NO | NO | Benches | YES | Boardwalk | Physical |
| 279 | NO | No Charge | Annapolis | NO | NO | NO | NO | NO | NO | NO | NO | NO | NO | Benches | NO | Boardwalk | Physical |
| 280 | NO | No Charge | Ridgeway | NO | NO | NO | NO | NO | NO | NO | NO | NO | NO | Benches | YES | Boardwalk | Physical |
| 281 | NO | No Charge | Dover | NO | NO | NO | NO | NO | NO | NO | NO | NO | NO | Benches | YES | Boardwalk | Physical |
| 282 | NO | No Charge | Elberon | NO | NO | NO | NO | NO | NO | NO | NO | NO | NO | Benches | YES | Boardwalk | Physical |
| 283 | NO | No Charge | Lincoln | NO | NO | NO | NO | NO | NO | NO | NO | NO | NO | Benches | YES | Boardwalk | Physical |
| 284 | NO | No Charge | Roosevelt | NO | NO | NO | NO | NO | NO | NO | NO | NO | NO | Benches | YES | Boardwalk | Physical |
| 285 | NO | No Charge | Albany | NO | NO | NO | NO | NO | NO | NO | NO | NO | YES | Benches | YES | Boardwalk | Physical |
| 286 | NO | No Charge | Hartford | NO | NO | NO | NO | NO | NO | NO | NO | NO | NO | Benches | YES | Boardwalk | Physical |
| 287 | NO | No Charge | Wilson | NO | NO | NO | NO | NO | NO | NO | NO | NO | NO | Benches | YES | Boardwalk | Physical |
| 288 | NO | NO | Providence | NO | NO | NO | NO | NO | NO | NO | NO | NO | NO | Benches | YES | Boardwalk | Physical |
| 289 | NO | NO | Sovereign | NO | NO | NO | NO | NO | NO | NO | NO | YES | NO | Benches | YES | Boardwalk | Physical |
| 290 | NO | No Charge | Chelsea | NO | NO | NO | NO | NO | NO | NO | NO | YES | YES | Benches | YES | Boardwalk | Physical |
| 291 | NO | No Charge | Morris | NO | NO | NO | NO | NO | NO | NO | NO | YES | NO | Benches | YES | Boardwalk | Physical |
| 292 | NO | NO | Iowa | NO | NO | NO | NO | NO | NO | NO | NO | NO | NO | NO | YES | Boardwalk | Physical |
| 293 | NO | No Charge | Belmont | NO | NO | NO | NO | NO | NO | NO | NO | YES | NO | Benches | YES | Boardwalk | Physical |
| 294 | NO | No Charge | California | NO | NO | NO | NO | NO | NO | NO | NO | NO | NO | NO | YES | Boardwalk | Physical |
| 295 | NO | No Charge | Texas | NO | NO | NO | NO | NO | NO | NO | NO | YES | NO | Benches | YES | Boardwalk | Physical |
| 296 | NO | No Charge | Bellevue | NO | NO | NO | NO | NO | NO | NO | NO | YES | NO | Benches | NO | Boardwalk | Physical |
| 297 | NO | NO | Florida | NO | NO | NO | NO | NO | NO | NO | NO | NO | NO | Benches | NO | Boardwalk | Physical |
| 298 | NO | Charge | Mississippi | NO | NO | NO | NO | NO | NO | NO | NO | YES | YES | Benches | YES | Boardwalk | Physical |
| 299 | NO | Charge | Columbia | NO | NO | NO | NO | NO | NO | NO | NO | YES | YES | Benches | YES | Boardwalk | Physical |
| 300 | NO | Charge | Missouri | NO | NO | NO | NO | NO | NO | NO | NO | YES | NO | Benches | YES | Boardwalk | Physical |
| 301 | NO | Charge | Arkansas | NO | NO | NO | NO | NO | NO | NO | NO | YES | NO | Benches | YES | Boardwalk | Physical |
| 302 | NO | Charge | Michigan | NO | NO | NO | NO | NO | NO | NO | NO | YES | NO | Benches | YES | Boardwalk | Physical |
| 304 | NO | No Charge | Murray | NO | NO | NO | NO | NO | NO | NO | YES | NO | NO | NO | NO | Canal | Visual/Water |
| 305 | NO | No Charge | Riverside | NO | NO | YES | NO | NO | NO | NO | NO | NO | NO | NO | YES | Canal | Visual |
| 306 | NO | NO | | NO | NO | NO | NO | NO | NO | NO | NO | NO | NO | NO | NO | Boardwalk | Physical |
| 307 | NO | No Charge | Berkley | NO | NO | NO | NO | NO | NO | NO | NO | NO | NO | Benches | YES | Boardwalk | Physical |
| 308 | NO | No Charge | Montpelier | NO | NO | NO | NO | NO | NO | NO | NO | YES | NO | Benches | YES | Boardwalk | Physical |

APPENDIX 4
Recreation and Open Space Inventory (ROSI)



City of Atlantic City, New Jersey
2012 RECREATION & OPEN SPACE INVENTORY
 February 2012

- 1 All Wars Memorial Playground
- 2 Altman Field/Playground
- 3 Arizona Avenue & Bay Memorial Park
- 4 Atlantic City Expressway Park
- 5 Bader Field
- 6 Boston Avenue Park
- 7 Boys & Girls Club Playground/
Usry Daycare Center
- 8 Boys & Girls Club Recreation Complex
- 9 Brighton Park & Korean War Memorial
- 10 Chelsea Heights Ball Fields &
Annapolis Avenue Recreation Complex
- 11 Chelsea Heights Nature Overlook
- 12 Civil Rights Garden
- 13 Columbus Park/Grand Boulevard/
Lighthouse Park Boulevard
- 14 Delancy Park
- 15 Delaware Avenue Park
- 16 Dover Avenue Park
- 17 Drexel Avenue Park/Clock Tower Park
- 18 Dwayne E. Harris Memorial Park
(Brigantine Playground)
- 19 Edith Donaldson Playground
- 20 Fishermans Park
- 21 Gardners Basin Park
- 22 Harold R. Brown Memorial Park
- 23 Horace Bryant Playground
- 24 Kingston Avenue Playground
- 25 Lagoon Playground
- 26 Maine Avenue Promenade
- 27 Memorial Park
- 28 Metroplex/Center City Park
- 29 North Carolina Avenue Park
- 30 O'Donnell Memorial Park
- 31 Pete Pallitto Field & Playground
- 32 Pitney Village Playground
- 33 Police & Firefighters Memorial Plaza
- 34 Pop Lloyd Stadium & Field
- 35 Shellem-Royal Field &
Maud R. Greene Playground
- 36 Sunset Avenue Promenade (4th Ward)
- 37 Sunset Avenue Promenade (5th Ward)
- 38 Sunset Avenue Promenade (6th Ward)
- 39 Texas Avenue Playground (Gary Grant, Jr.
& Joe McCabe Memorial Park)
- 40 Uptown Park
- 41 Weekes Westside Memorial Park
- 42 Winchester Avenue Park
- 43 Beach

