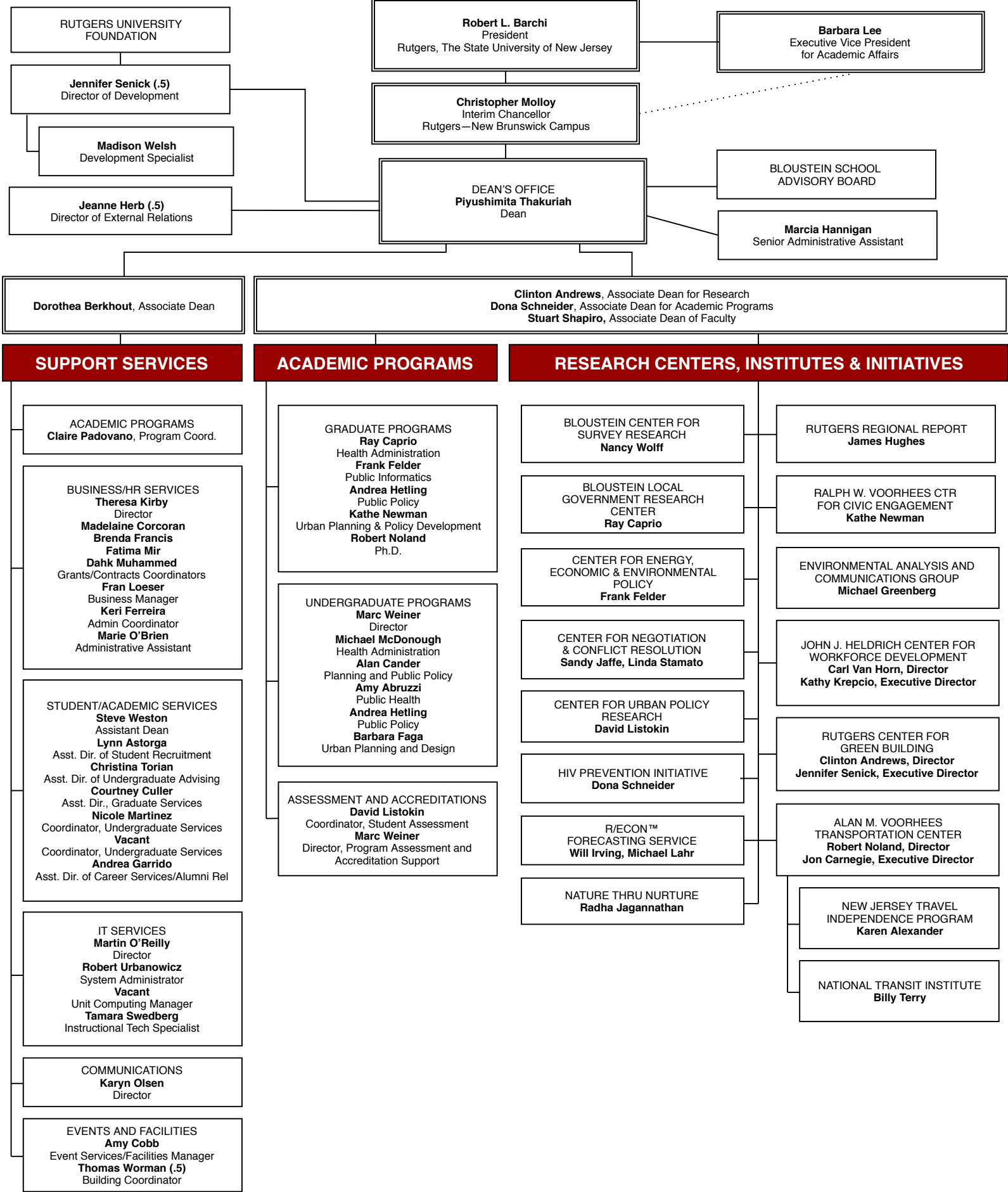


**EDWARD J. BLOUSTEIN SCHOOL OF PLANNING AND PUBLIC POLICY  
ORGANIZATION CHART (APRIL 2019)**



RUTGERS UNIVERSITY FOUNDATION

**Jennifer Senick (.5)**  
Director of Development

**Madison Welsh**  
Development Specialist

**Jeanne Herb (.5)**  
Director of External Relations

**Robert L. Barchi**  
President  
Rutgers, The State University of New Jersey

**Christopher Molloy**  
Interim Chancellor  
Rutgers—New Brunswick Campus

**DEAN'S OFFICE**  
**Piyushimita Thakuriah**  
Dean

**Barbara Lee**  
Executive Vice President  
for Academic Affairs

**BLOUSTEIN SCHOOL  
ADVISORY BOARD**

**Marcia Hannigan**  
Senior Administrative Assistant

**Dorothea Berkhout**, Associate Dean

**Clinton Andrews**, Associate Dean for Research  
**Dona Schneider**, Associate Dean for Academic Programs  
**Stuart Shapiro**, Associate Dean of Faculty

**SUPPORT SERVICES**

**ACADEMIC PROGRAMS**  
Claire Padovano, Program Coord.

**BUSINESS/HR SERVICES**  
**Theresa Kirby**  
Director  
**Madelaine Corcoran**  
**Brenda Francis**  
**Fatima Mir**  
**Dahk Muhammed**  
Grants/Contracts Coordinators  
**Fran Loeser**  
Business Manager  
**Keri Ferreira**  
Admin Coordinator  
**Marie O'Brien**  
Administrative Assistant

**STUDENT/ACADEMIC SERVICES**  
**Steve Weston**  
Assistant Dean  
**Lynn Astorga**  
Asst. Dir. of Student Recruitment  
**Christina Torian**  
Asst. Dir. of Undergraduate Advising  
**Courtney Culler**  
Asst. Dir., Graduate Services  
**Nicole Martinez**  
Coordinator, Undergraduate Services  
**Vacant**  
Coordinator, Undergraduate Services  
**Andrea Garrido**  
Asst. Dir. of Career Services/Alumni Rel

**IT SERVICES**  
**Martin O'Reilly**  
Director  
**Robert Urbanowicz**  
System Administrator  
**Vacant**  
Unit Computing Manager  
**Tamara Swedberg**  
Instructional Tech Specialist

**COMMUNICATIONS**  
**Karyn Olsen**  
Director

**EVENTS AND FACILITIES**  
**Amy Cobb**  
Event Services/Facilities Manager  
**Thomas Worman (.5)**  
Building Coordinator

**ACADEMIC PROGRAMS**

**GRADUATE PROGRAMS**  
**Ray Caprio**  
Health Administration  
**Frank Felder**  
Public Informatics  
**Andrea Hetling**  
Public Policy  
**Kathe Newman**  
Urban Planning & Policy Development  
**Robert Noland**  
Ph.D.

**UNDERGRADUATE PROGRAMS**  
**Marc Weiner**  
Director  
**Michael McDonough**  
Health Administration  
**Alan Cander**  
Planning and Public Policy  
**Amy Abruzzi**  
Public Health  
**Andrea Hetling**  
Public Policy  
**Barbara Faga**  
Urban Planning and Design

**ASSESSMENT AND ACCREDITATIONS**  
**David Listokin**  
Coordinator, Student Assessment  
**Marc Weiner**  
Director, Program Assessment and Accreditation Support

**RESEARCH CENTERS, INSTITUTES & INITIATIVES**

**BLOUSTEIN CENTER FOR SURVEY RESEARCH**  
**Nancy Wolff**

**BLOUSTEIN LOCAL GOVERNMENT RESEARCH CENTER**  
**Ray Caprio**

**CENTER FOR ENERGY, ECONOMIC & ENVIRONMENTAL POLICY**  
**Frank Felder**

**CENTER FOR NEGOTIATION & CONFLICT RESOLUTION**  
**Sandy Jaffe, Linda Stamato**

**CENTER FOR URBAN POLICY RESEARCH**  
**David Listokin**

**HIV PREVENTION INITIATIVE**  
**Dona Schneider**

**R/ECON™ FORECASTING SERVICE**  
**Will Irving, Michael Lahr**

**NATURE THRU NURTURE**  
**Radha Jagannathan**

**RUTGERS REGIONAL REPORT**  
**James Hughes**

**RALPH W. VOORHEES CTR FOR CIVIC ENGAGEMENT**  
**Kathe Newman**

**ENVIRONMENTAL ANALYSIS AND COMMUNICATIONS GROUP**  
**Michael Greenberg**

**JOHN J. HELDRICH CENTER FOR WORKFORCE DEVELOPMENT**  
**Carl Van Horn, Director**  
**Kathy Krepcio, Executive Director**

**RUTGERS CENTER FOR GREEN BUILDING**  
**Clinton Andrews, Director**  
**Jennifer Senick, Executive Director**

**ALAN M. VOORHEES TRANSPORTATION CENTER**  
**Robert Noland, Director**  
**Jon Carnegie, Executive Director**

**NEW JERSEY TRAVEL INDEPENDENCE PROGRAM**  
**Karen Alexander**

**NATIONAL TRANSIT INSTITUTE**  
**Billy Terry**