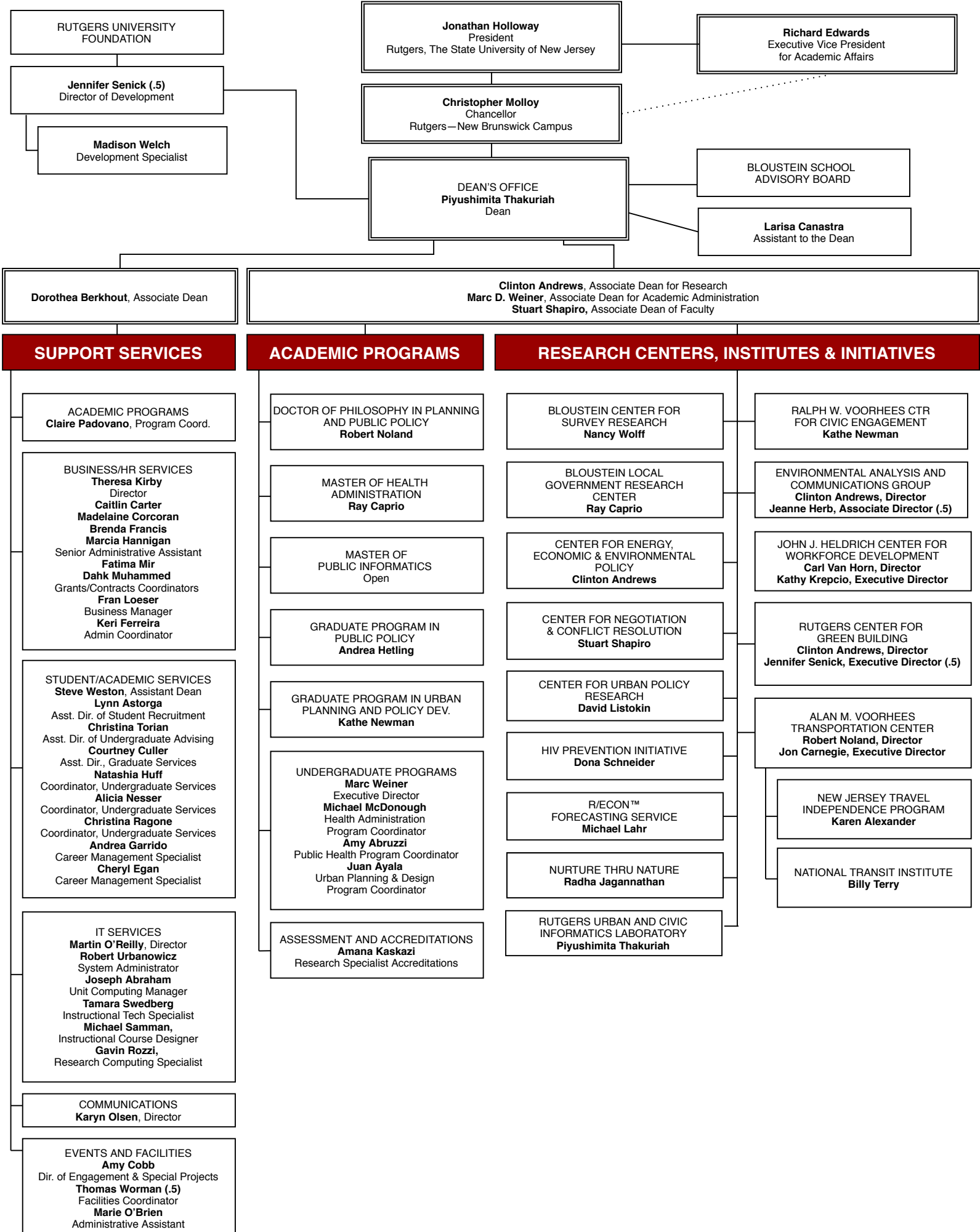


**EDWARD J. BLOUSTEIN SCHOOL OF PLANNING AND PUBLIC POLICY  
ORGANIZATION CHART (JANUARY 2021)**



RUTGERS UNIVERSITY FOUNDATION

**Jennifer Senick (.5)**  
Director of Development

**Madison Welch**  
Development Specialist

**Jonathan Holloway**  
President  
Rutgers, The State University of New Jersey

**Richard Edwards**  
Executive Vice President  
for Academic Affairs

**Christopher Molloy**  
Chancellor  
Rutgers--New Brunswick Campus

DEAN'S OFFICE  
**Piyushimita Thakuriah**  
Dean

BLOUSTEIN SCHOOL  
ADVISORY BOARD

**Larisa Canastra**  
Assistant to the Dean

**Dorothea Berkhout**, Associate Dean

**Clinton Andrews**, Associate Dean for Research  
**Marc D. Weiner**, Associate Dean for Academic Administration  
**Stuart Shapiro**, Associate Dean of Faculty

**SUPPORT SERVICES**

ACADEMIC PROGRAMS  
**Claire Padovano**, Program Coord.

BUSINESS/HR SERVICES  
**Theresa Kirby**  
Director  
**Caitlin Carter**  
**Madelaine Corcoran**  
**Brenda Francis**  
**Marcia Hannigan**  
Senior Administrative Assistant  
**Fatima Mir**  
**Dahk Muhammed**  
Grants/Contracts Coordinators  
**Fran Loeser**  
Business Manager  
**Keri Ferreira**  
Admin Coordinator

STUDENT/ACADEMIC SERVICES  
**Steve Weston**, Assistant Dean  
**Lynn Astorga**  
Asst. Dir. of Student Recruitment  
**Christina Torian**  
Asst. Dir. of Undergraduate Advising  
**Courtney Culler**  
Asst. Dir., Graduate Services  
**Natashia Huff**  
Coordinator, Undergraduate Services  
**Alicia Nesser**  
Coordinator, Undergraduate Services  
**Christina Ragone**  
Coordinator, Undergraduate Services  
**Andrea Garrido**  
Career Management Specialist  
**Cheryl Egan**  
Career Management Specialist

IT SERVICES  
**Martin O'Reilly**, Director  
**Robert Urbanowicz**  
System Administrator  
**Joseph Abraham**  
Unit Computing Manager  
**Tamara Swedberg**  
Instructional Tech Specialist  
**Michael Samman**,  
Instructional Course Designer  
**Gavin Rozzi**,  
Research Computing Specialist

COMMUNICATIONS  
**Karyn Olsen**, Director

EVENTS AND FACILITIES  
**Amy Cobb**  
Dir. of Engagement & Special Projects  
**Thomas Worman (.5)**  
Facilities Coordinator  
**Marie O'Brien**  
Administrative Assistant

**ACADEMIC PROGRAMS**

DOCTOR OF PHILOSOPHY IN PLANNING  
AND PUBLIC POLICY  
**Robert Noland**

MASTER OF HEALTH  
ADMINISTRATION  
**Ray Caprio**

MASTER OF  
PUBLIC INFORMATICS  
Open

GRADUATE PROGRAM IN  
PUBLIC POLICY  
**Andrea Hetling**

GRADUATE PROGRAM IN URBAN  
PLANNING AND POLICY DEV.  
**Kathe Newman**

UNDERGRADUATE PROGRAMS  
**Marc Weiner**  
Executive Director  
**Michael McDonough**  
Health Administration  
Program Coordinator  
**Amy Abruzzi**  
Public Health Program Coordinator  
**Juan Ayala**  
Urban Planning & Design  
Program Coordinator

ASSESSMENT AND ACCREDITATIONS  
**Amana Kaskazi**  
Research Specialist Accreditations

**RESEARCH CENTERS, INSTITUTES & INITIATIVES**

BLOUSTEIN CENTER FOR  
SURVEY RESEARCH  
**Nancy Wolff**

BLOUSTEIN LOCAL  
GOVERNMENT RESEARCH  
CENTER  
**Ray Caprio**

CENTER FOR ENERGY,  
ECONOMIC & ENVIRONMENTAL  
POLICY  
**Clinton Andrews**

CENTER FOR NEGOTIATION  
& CONFLICT RESOLUTION  
**Stuart Shapiro**

CENTER FOR URBAN POLICY  
RESEARCH  
**David Listokin**

HIV PREVENTION INITIATIVE  
**Dona Schneider**

R/ECON™  
FORECASTING SERVICE  
**Michael Lahr**

NURTURE THRU NATURE  
**Radha Jagannathan**

RUTGERS URBAN AND CIVIC  
INFORMATICS LABORATORY  
**Piyushimita Thakuriah**

RALPH W. VOORHEES CTR  
FOR CIVIC ENGAGEMENT  
**Kathe Newman**

ENVIRONMENTAL ANALYSIS AND  
COMMUNICATIONS GROUP  
**Clinton Andrews**, Director  
**Jeanne Herb**, Associate Director (.5)

JOHN J. HELDRICH CENTER FOR  
WORKFORCE DEVELOPMENT  
**Carl Van Horn**, Director  
**Kathy Krepcio**, Executive Director

RUTGERS CENTER FOR  
GREEN BUILDING  
**Clinton Andrews**, Director  
**Jennifer Senick**, Executive Director (.5)

ALAN M. VOORHEES  
TRANSPORTATION CENTER  
**Robert Noland**, Director  
**Jon Carnegie**, Executive Director

NEW JERSEY TRAVEL  
INDEPENDENCE PROGRAM  
**Karen Alexander**

NATIONAL TRANSIT INSTITUTE  
**Billy Terry**