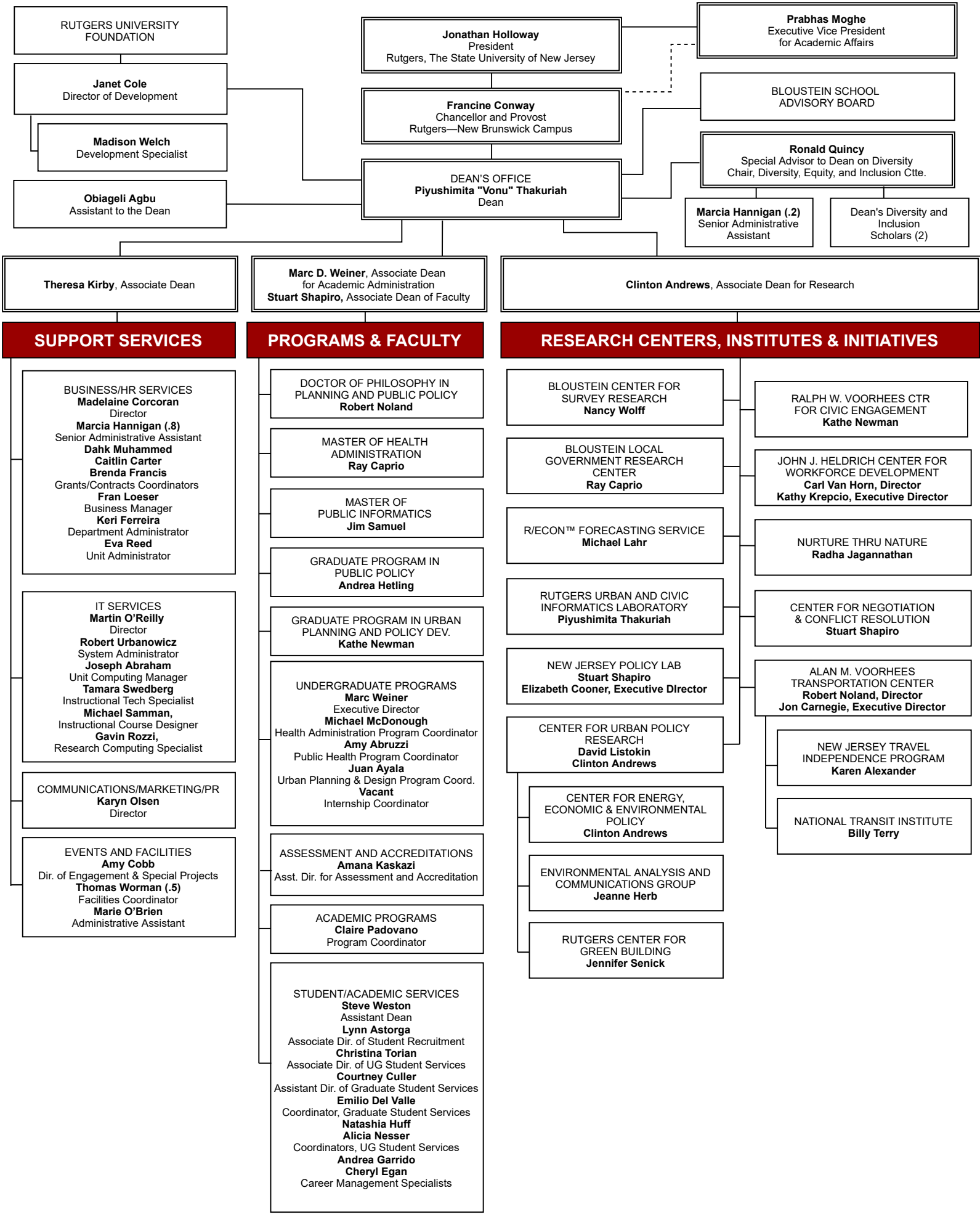


# EDWARD J. BLOUSTEIN SCHOOL OF PLANNING AND PUBLIC POLICY ORGANIZATION CHART (NOVEMBER 2021)



RUTGERS UNIVERSITY FOUNDATION

**Janet Cole**  
Director of Development

**Madison Welch**  
Development Specialist

**Obiageli Agbu**  
Assistant to the Dean

**Jonathan Holloway**  
President  
Rutgers, The State University of New Jersey

**Francine Conway**  
Chancellor and Provost  
Rutgers—New Brunswick Campus

DEAN'S OFFICE  
**Piyushimita "Vonu" Thakuriah**  
Dean

**Prabhas Moghe**  
Executive Vice President  
for Academic Affairs

BLOUSTEIN SCHOOL  
ADVISORY BOARD

**Ronald Quincy**  
Special Advisor to Dean on Diversity  
Chair, Diversity, Equity, and Inclusion Cttee.

**Marcia Hannigan (.2)**  
Senior Administrative  
Assistant

Dean's Diversity and  
Inclusion  
Scholars (2)

**Theresa Kirby**, Associate Dean

**Marc D. Weiner**, Associate Dean  
for Academic Administration  
**Stuart Shapiro**, Associate Dean of Faculty

**Clinton Andrews**, Associate Dean for Research

## SUPPORT SERVICES

**BUSINESS/HR SERVICES**  
**Madelaine Corcoran**  
Director

**Marcia Hannigan (.8)**  
Senior Administrative Assistant

**Dahk Muhammed**  
**Caitlin Carter**  
**Brenda Francis**  
Grants/Contracts Coordinators

**Fran Loeser**  
Business Manager

**Keri Ferreira**  
Department Administrator

**Eva Reed**  
Unit Administrator

**IT SERVICES**  
**Martin O'Reilly**  
Director

**Robert Urbanowicz**  
System Administrator

**Joseph Abraham**  
Unit Computing Manager

**Tamara Swedberg**  
Instructional Tech Specialist

**Michael Samman**,  
Instructional Course Designer

**Gavin Rozzi**,  
Research Computing Specialist

**COMMUNICATIONS/MARKETING/PR**  
**Karyn Olsen**  
Director

**EVENTS AND FACILITIES**  
**Amy Cobb**  
Dir. of Engagement & Special Projects

**Thomas Worman (.5)**  
Facilities Coordinator

**Marie O'Brien**  
Administrative Assistant

## PROGRAMS & FACULTY

DOCTOR OF PHILOSOPHY IN  
PLANNING AND PUBLIC POLICY  
**Robert Noland**

MASTER OF HEALTH  
ADMINISTRATION  
**Ray Caprio**

MASTER OF  
PUBLIC INFORMATICS  
**Jim Samuel**

GRADUATE PROGRAM IN  
PUBLIC POLICY  
**Andrea Hetling**

GRADUATE PROGRAM IN URBAN  
PLANNING AND POLICY DEV.  
**Kathe Newman**

UNDERGRADUATE PROGRAMS  
**Marc Weiner**  
Executive Director

**Michael McDonough**  
Health Administration Program Coordinator

**Amy Abruzzi**  
Public Health Program Coordinator

**Juan Ayala**  
Urban Planning & Design Program Coord.

**Vacant**  
Internship Coordinator

ASSESSMENT AND ACCREDITATIONS  
**Amana Kaskazi**  
Asst. Dir. for Assessment and Accreditation

ACADEMIC PROGRAMS  
**Claire Padovano**  
Program Coordinator

STUDENT/ACADEMIC SERVICES  
**Steve Weston**  
Assistant Dean

**Lynn Astorga**  
Associate Dir. of Student Recruitment

**Christina Torian**  
Associate Dir. of UG Student Services

**Courtney Culler**  
Assistant Dir. of Graduate Student Services

**Emilio Del Valle**  
Coordinator, Graduate Student Services

**Natashia Huff**  
**Alicia Nesser**  
Coordinators, UG Student Services

**Andrea Garrido**  
**Cheryl Egan**  
Career Management Specialists

## RESEARCH CENTERS, INSTITUTES & INITIATIVES

BLOUSTEIN CENTER FOR  
SURVEY RESEARCH  
**Nancy Wolff**

BLOUSTEIN LOCAL  
GOVERNMENT RESEARCH  
CENTER  
**Ray Caprio**

R/ECON™ FORECASTING SERVICE  
**Michael Lahr**

RUTGERS URBAN AND CIVIC  
INFORMATICS LABORATORY  
**Piyushimita Thakuriah**

NEW JERSEY POLICY LAB  
**Stuart Shapiro**  
**Elizabeth Cooner**, Executive Director

CENTER FOR URBAN POLICY  
RESEARCH  
**David Listokin**  
**Clinton Andrews**

CENTER FOR ENERGY,  
ECONOMIC & ENVIRONMENTAL  
POLICY  
**Clinton Andrews**

ENVIRONMENTAL ANALYSIS AND  
COMMUNICATIONS GROUP  
**Jeanne Herb**

RUTGERS CENTER FOR  
GREEN BUILDING  
**Jennifer Senick**

RALPH W. VOORHEES CTR  
FOR CIVIC ENGAGEMENT  
**Kathe Newman**

JOHN J. HELDRICH CENTER FOR  
WORKFORCE DEVELOPMENT  
**Carl Van Horn**, Director  
**Kathy Krepcio**, Executive Director

NURTURE THRU NATURE  
**Radha Jagannathan**

CENTER FOR NEGOTIATION  
& CONFLICT RESOLUTION  
**Stuart Shapiro**

ALAN M. VOORHEES  
TRANSPORTATION CENTER  
**Robert Noland**, Director  
**Jon Carnegie**, Executive Director

NEW JERSEY TRAVEL  
INDEPENDENCE PROGRAM  
**Karen Alexander**

NATIONAL TRANSIT INSTITUTE  
**Billy Terry**